

### **s37 Application to connect Lochluichart Wind Farm Extension II into the National Grid**

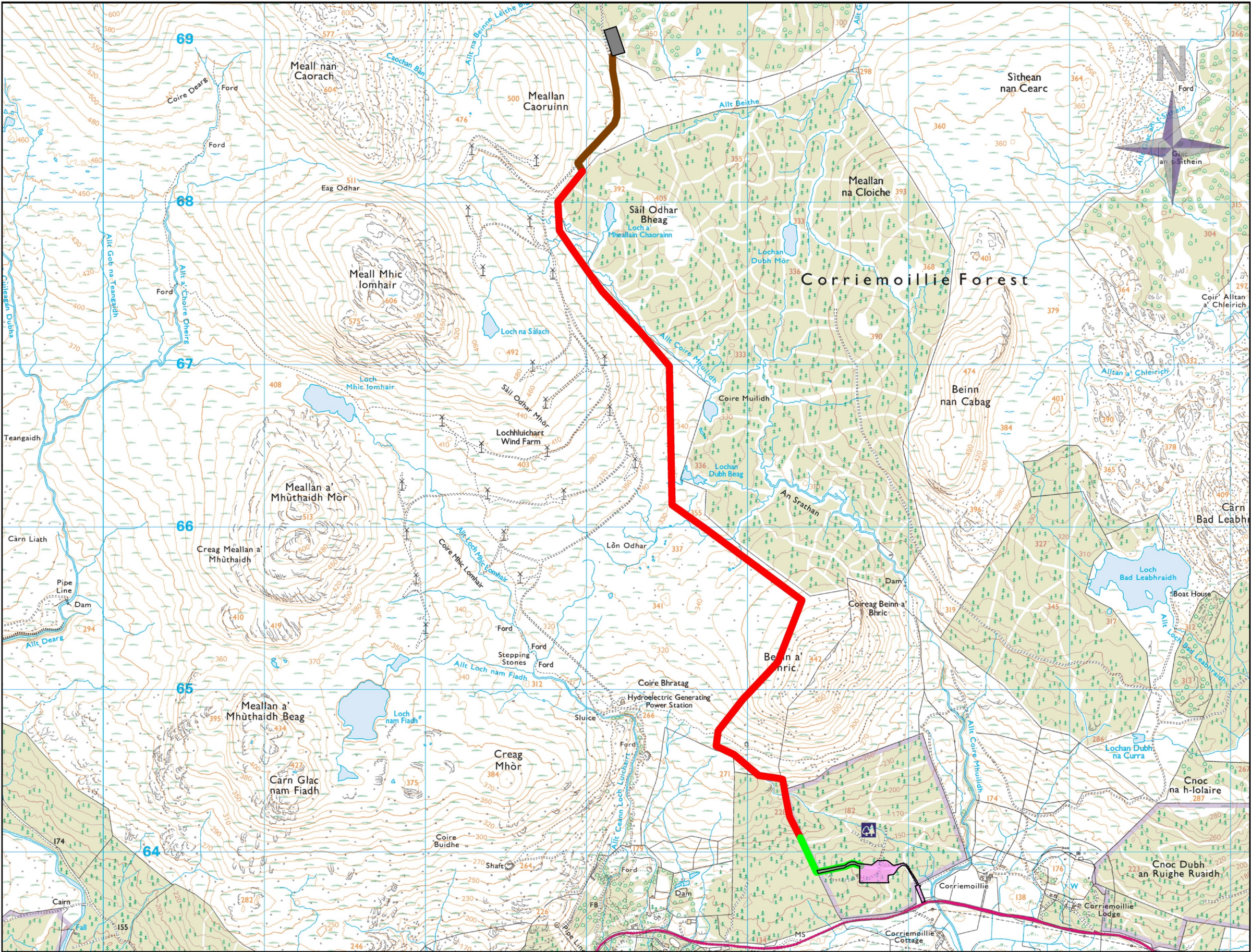
- Application due to be submitted in October this year;
- **Figure 1** shows indicative wayleave route (s37), there might some minor revisions once peat & ecology surveys have been completed but route largely agreed;
- Part underground/part overground line (see key – brown & green/red);
- The route will be a 100m 'Line of Deviation' corridor, which allows flexibility when coming to construction in case of unexpected environmental or technical constraints (e.g. rock);
- The 33kV cable width will be approximately 5-6m;
- The overhead line poles will be approximate 12-16m in height (see photo below);



- Poles will be spaced apart according elevation & steepness of slope;
- Current signed grid connection offer: **31<sup>st</sup> October 2024**
- Expectation construction of wind farm would commence Summer 2023, and last 14 months – construction of grid connection would tie in with this timeline;
- When planning documents are nearly completed, will be forwarded to GDCC for view – includes photomontages;



Figure 1: Lochluichart Wind Farm Extension II—Indicative Grid Wayleave Route s37 Application



**Legend:**

- Substation/Control Building/ Construction Compound
- Northern Underground Cable
- Central Overhead Cable
- Southern Underground Cable
- Corriemoillie Substation

**Title:**  
Indicative Grid Wayleave Route  
s37 Application

**Project:**  
Lochluichart Wind Farm Ext II

**Source:**  
Reproduced from Ordnance Survey maps ©  
Crown copyright and  
database rights 2020  
Ordnance Survey 0100031673

<b>Drawn By:</b> SSH	<b>Checked:</b>
<b>Date:</b> Aug 2021	<b>Figure:</b>
<b>Scale:</b> A3 @ 1-25K	<b>Revision No:</b> V4

INFINERGY