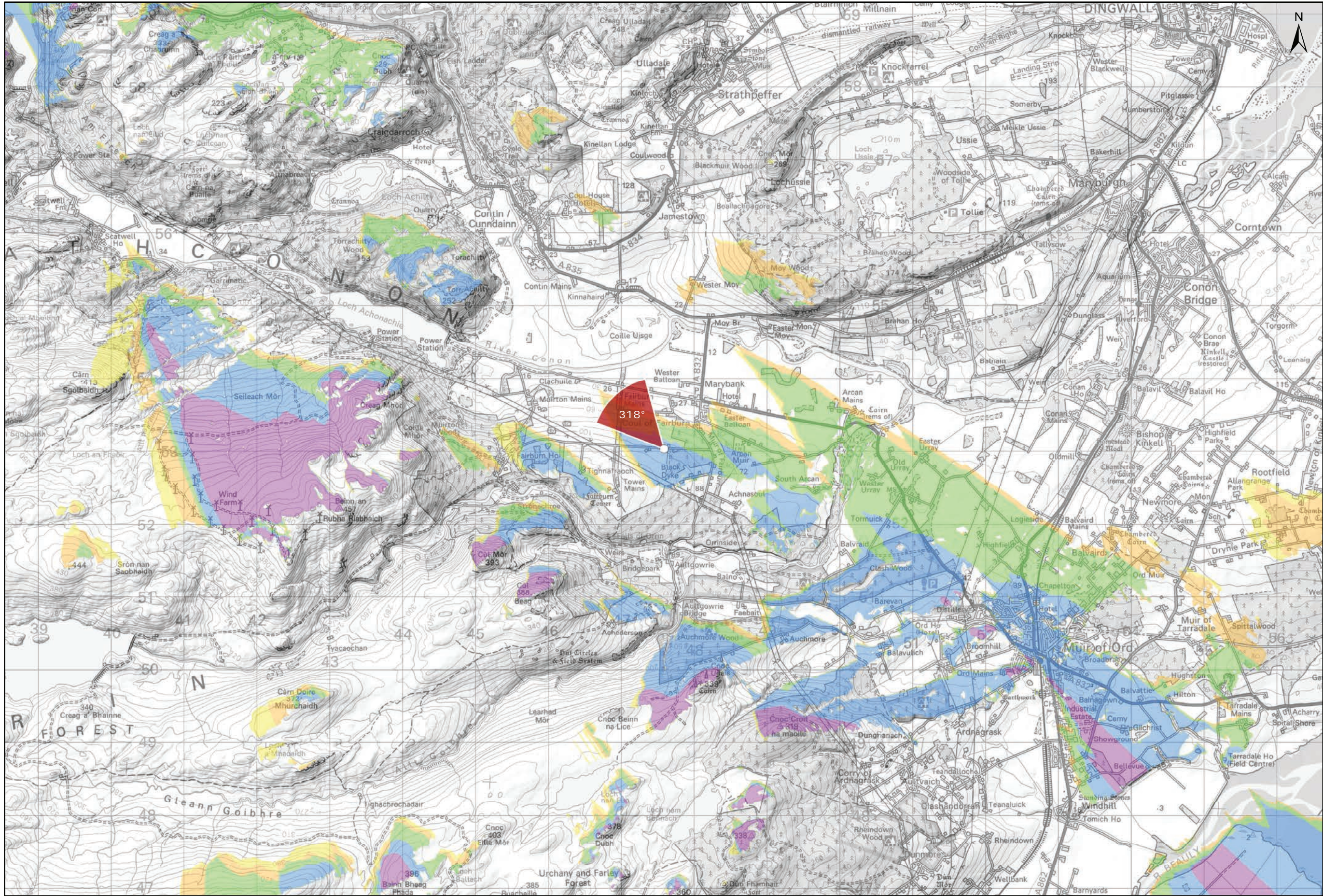


Viewpoint Location Plan Baseline Panorama
Scale: 1:150,000



Viewpoint Location Plan
Scale: 1:50,000 (Blade Tip ZTV)

Legend:

- Proposed Turbines
- Cumulative Wind Farm Status
 - Operational / Under Construction
 - Consented
 - Application
- Blade Tip ZTV
 - No. of Blade Tip Visible
 - 1
 - 2
 - 3
 - 4
 - 5
- Viewpoint
 - Viewpoint Location
 - 90° Field of View Viewpoint
 - 53.5° Field of View Viewpoint

Title:
Viewpoint 9: Avenue of Fairburn Estate

Lochluichart Wind Farm Extension II

Source:
© Crown copyright and database rights 2019
Ordnance Survey 0100031673

Client:
Infinergy

Drawn by: SH	Checked: JP
Date: 25/01/2021	Figure: 8.30a
Scale:	Revision No: 1

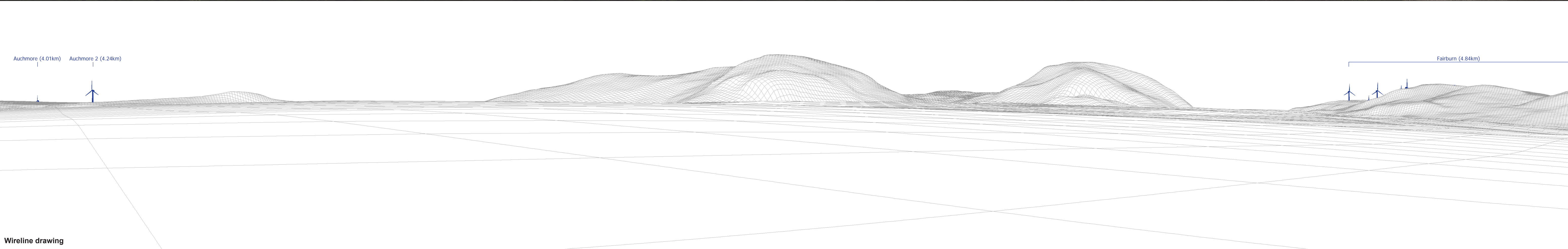
INFINERGY

Note:
1. **ZTV:** Created using ESRI ArcGIS 10.7.1 software using the following data and parameters:
Blade tip height: 149.9m
DTM Data: OS Terrain 5 DTM. Resampled to a 10m grid.
Observer height: 1.5m
No surface features, such as buildings or trees, were included in the analysis.
Earth curvature and light refraction has been included in calculations.



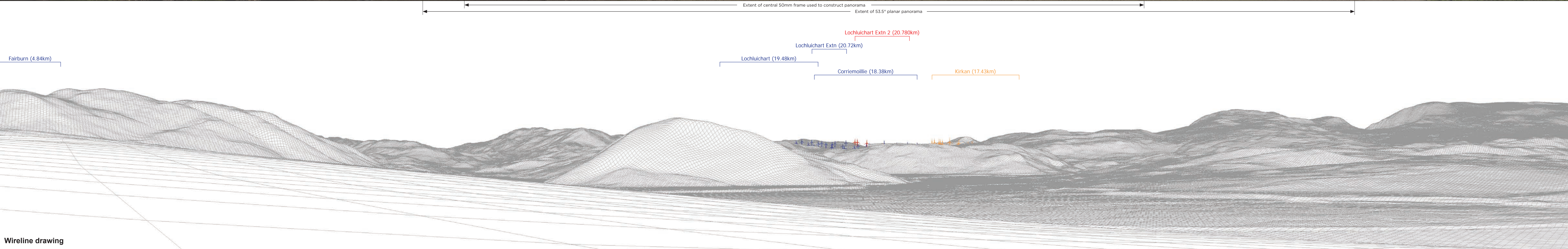
Baseline photograph

This image provides landscape and visual context only



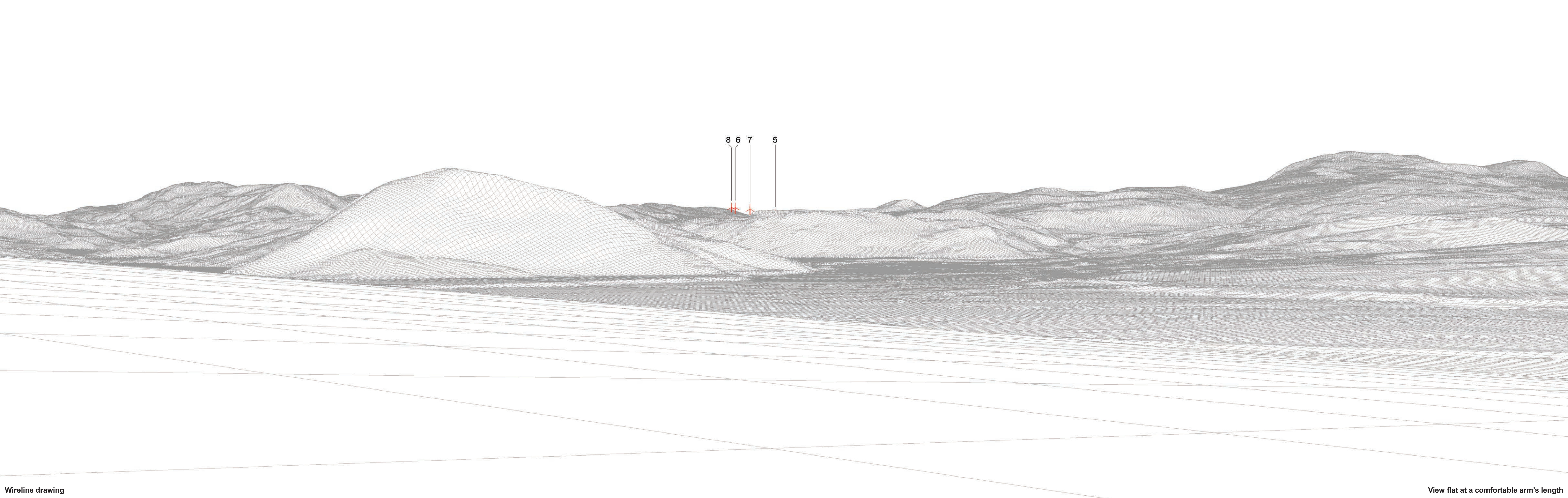
Wireline drawing

OS reference:	247591 E 853038 N	Horizontal field of view: 90° (cylindrical projection) Principal distance 522 mm	Camera:	Canon EOS 5D Mark II	Figure: 8.30b Viewpoint 9: Avenue of Fairburn Estate
Eye level:	99.2 m AOD		Lens:	50mm (Canon EF 50mm f/1.4)	
Direction of view:	222°		Camera height:	1.5 m AGL	
Nearest turbine:	20.780 km		Date and time:	16/05/18, 14:00	



OS reference:	247591 E 853038 N	Horizontal field of view:	90° (cylindrical projection)	Camera:	Canon EOS 5D Mark II
Eye level:	99.2 m AOD	Principal distance	522 mm	Lens:	50mm (Canon EF 50mm f/1.4)
Direction of view:	312°			Camera height:	1.5 m AGL
Nearest turbine:	20.780 km			Date and time:	16/05/18, 14:00

Figure: 8.30c
Viewpoint 9: Avenue of Fairburn Estate



Wireline drawing

View flat at a comfortable arm's length

OS reference: 247591 E 853038 N		Horizontal field of view: 53.5° (planar projection)		Camera: Canon EOS 5D Mark II	
Eye level: 99.2 m AOD		Principal distance: 812.5 mm		Lens: 50mm (Canon EF 50mm f/1.4)	
Direction of view: 318°		Paper size: 841 x 297 mm (half A1)		Camera height: 1.5 m AGL	
Nearest turbine: 20.780 km		Correct printed image size: 820 x 260 mm		Date and time: 16/05/18, 14:00	

Figure: 8.30d
Viewpoint 9: Avenue of Fairburn Estate



Photomontage (operational turbines have been montaged in this view)

View flat at a comfortable arm's length

OS reference:	247591 E 853038 N	Horizontal field of view:	53.5° (planar projection)	Camera:	Canon EOS 5D Mark II
Eye level:	99.2 m AOD	Principal distance	812.5 mm	Lens:	50mm (Canon EF 50mm f/1.4)
Direction of view:	318°	Paper size :	841 x 297 mm (half A1)	Camera height:	1.5 m AGL
Nearest turbine:	20.780 km	Correct printed image size:	820 x 260 mm	Date and time:	16/05/18, 14:00

Figure: 8.30e
Viewpoint 9: Avenue of Fairburn Estate