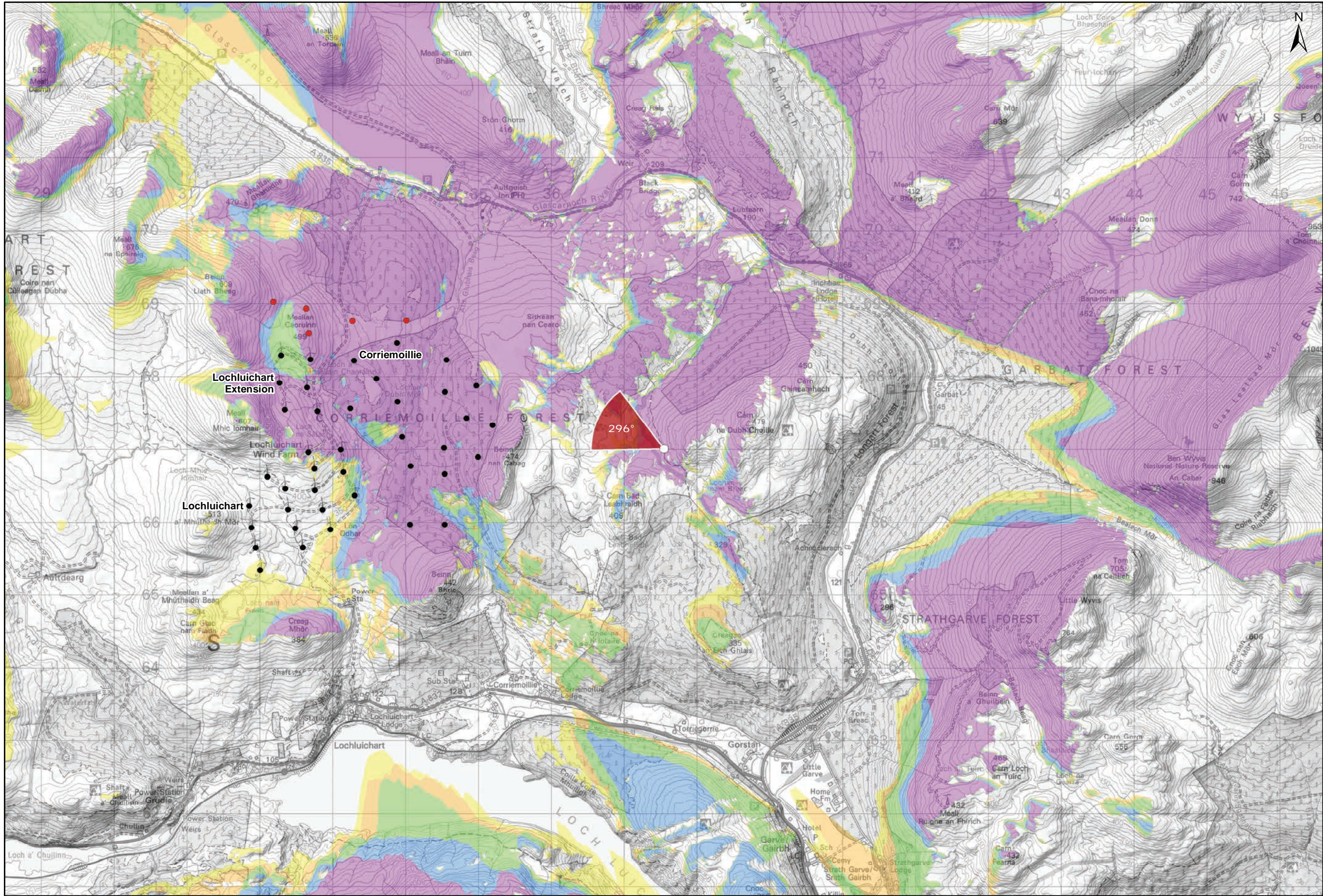


Viewpoint Location Plan Baseline Panorama
Scale: 1:150,000



Viewpoint Location Plan
Scale: 1:50,000 (Blade Tip ZTV)

Note:
1. **ZTV:** Created using ESRI ArcGIS 10.7.1 software using the following data and parameters:
Blade tip height: 149.9m
DTM Data: OS Terrain 5 DTM. Resampled to a 10m grid.
Observer height: 1.5m
No surface features, such as buildings or trees, were included in the analysis.
Earth curvature and light refraction has been included in calculations.

Legend:

- Proposed Turbines
- Cumulative Wind Farm Status
 - Cumulative Wind Turbines
 - Operational / Under Construction
 - Consented
 - Application
- Blade Tip ZTV
 - No. of Blade Tip Visible
 - 1
 - 2
 - 3
 - 4
 - 5
- Viewpoint
 - Viewpoint Location
 - 90° Field of View Viewpoint
 - 53.5° Field of View Viewpoint

Title:
Viewpoint 4: Old Drovers Route, Corriemoillie

Lochluichart Wind Farm Extension II

Source:
© Crown copyright and database rights 2019
Ordnance Survey 0100031673

Client:
Infinergy

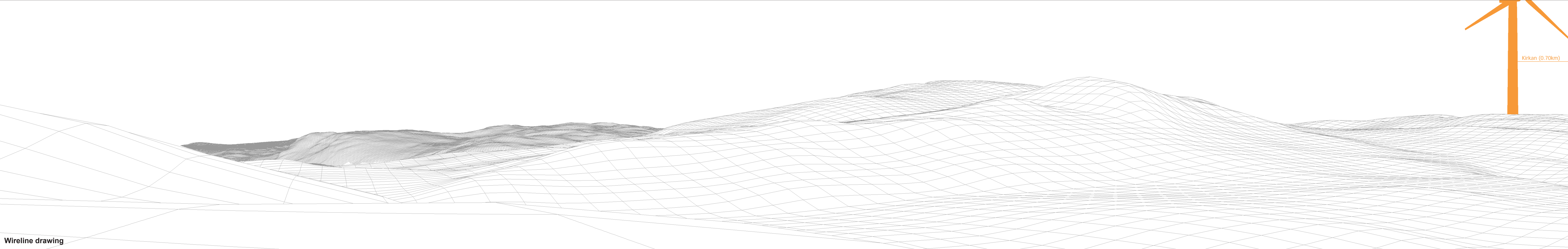
Drawn by:	Checked:
SH	JP
Date:	Figure:
25/01/2021	8.25a
Scale:	Revision No:
	1

INFINERGY



Baseline photograph

This image provides landscape and visual context only



Wireline drawing

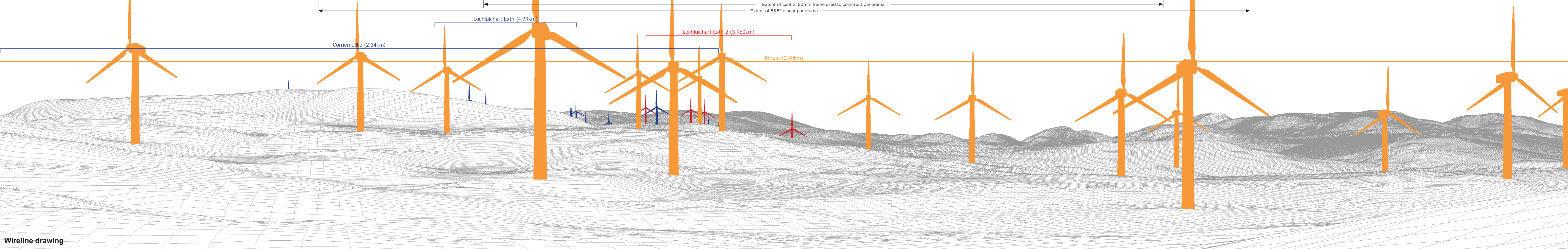
OS reference:	237546 E 867006 N	Horizontal field of view:	90° (cylindrical projection)	Camera:	Canon EOS 6D	Figure: 8.25b Viewpoint 4: Old Drovers Route, Corriemoillie
Eye level:	334.66 m AOD					
Direction of view:	206°	Camera height:	1.5 m AGL	Date and time:	04/05/17, 12:23	
Nearest turbine:	3.950 km					

Figure: 8.25b
Viewpoint 4: Old Drovers Route, Corriemoillie



Baseline photograph

This image provides landscape and visual context only



Wireline drawing

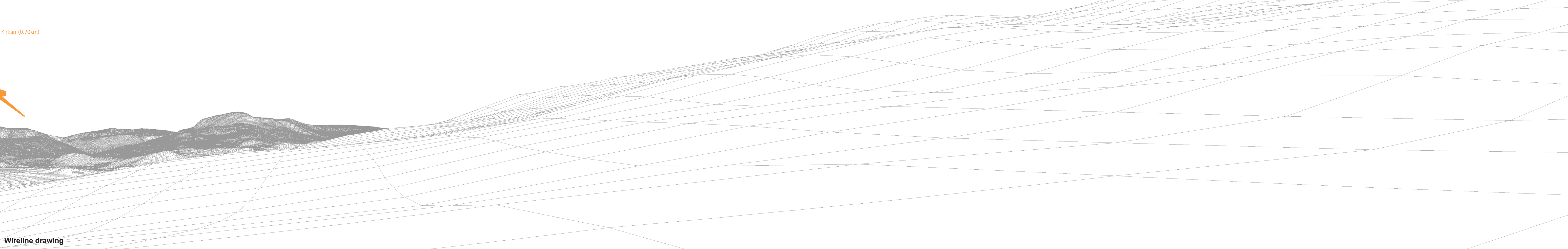
OS reference:	237546 E 867006 N	Horizontal field of view:	90° (cylindrical projection)	Camera:	Canon EOS 6D
Eye level:	334.66 m AOD	Principal distance	522 mm	Lens:	50mm (Canon EF 50mm f/1.4)
Direction of view:	296°			Camera height:	1.5 m AGL
Nearest turbine:	3.950 km			Date and time:	04/05/17, 12:23

Figure: 8.25c
Viewpoint 4: Old Drovers Route, Corriemoillie



Baseline photograph

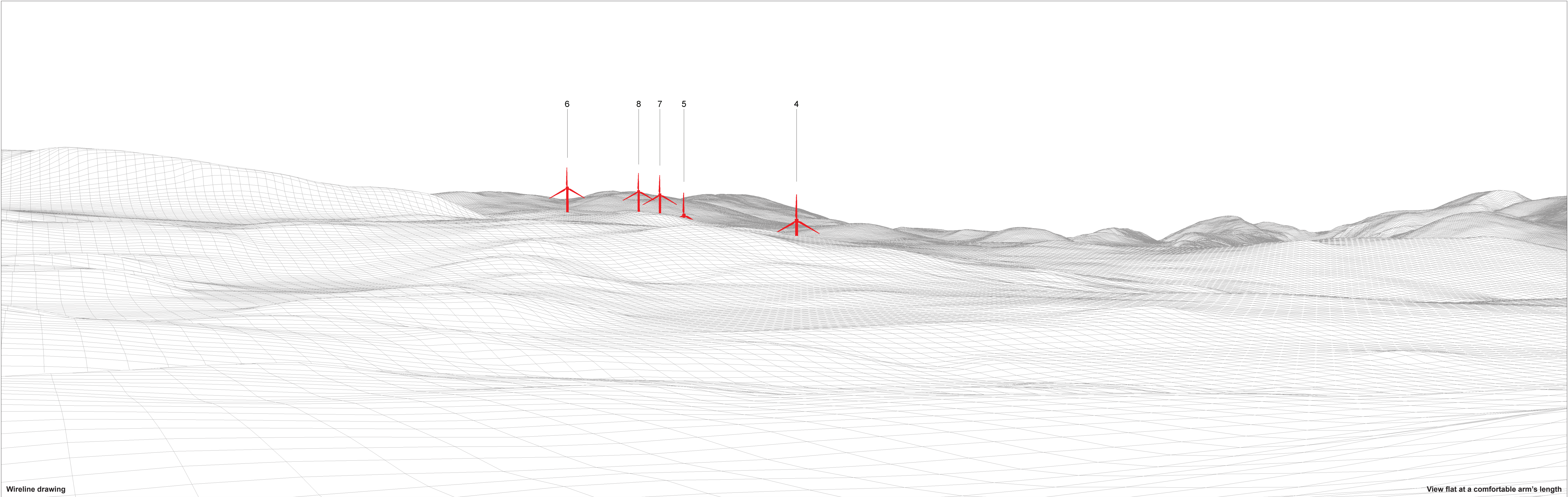
This image provides landscape and visual context only



Wireline drawing

OS reference:	237546 E 867006 N	Horizontal field of view:	90° (cylindrical projection)	Camera:	Canon EOS 6D
Eye level:	334.66 m AOD	Principal distance	522 mm	Lens:	50mm (Canon EF 50mm f/1.4)
Direction of view:	26°			Camera height:	1.5 m AGL
Nearest turbine:	3.950 km			Date and time:	04/05/17, 12:23

Figure: 8.25d
Viewpoint 4: Old Drovers Route, Corriemoillie



Wireline drawing

View flat at a comfortable arm's length

OS reference:	237546 E 867006 N	Horizontal field of view:	53.5° (planar projection)	Camera:	Canon EOS 6D
Eye level:	334.66 m AOD	Principal distance:	812.5 mm	Lens:	50mm (Canon EF 50mm f/1.4)
Direction of view:	296°	Paper size:	841 x 297 mm (half A1)	Camera height:	1.5 m AGL
Nearest turbine:	3.950 km	Correct printed image size:	820 x 260 mm	Date and time:	04/05/17, 12:23

Figure: 8.25e
Viewpoint 4: Old Drovers Route, Corriemoillie



Photomontage

View flat at a comfortable arm's length

OS reference:	237546 E 867006 N	Horizontal field of view:	53.5° (planar projection)	Camera:	Canon EOS 6D
Eye level:	334.66 m AOD	Principal distance	812.5 mm	Lens:	50mm (Canon EF 50mm f/1.4)
Direction of view:	296°	Paper size :	841 x 297 mm (half A1)	Camera height:	1.5 m AGL
Nearest turbine:	3.950 km	Correct printed image size:	820 x 260 mm	Date and time:	04/05/17, 12:23

Figure: 8.25f
Viewpoint 4: Old Drovers Route, Corriemoillie