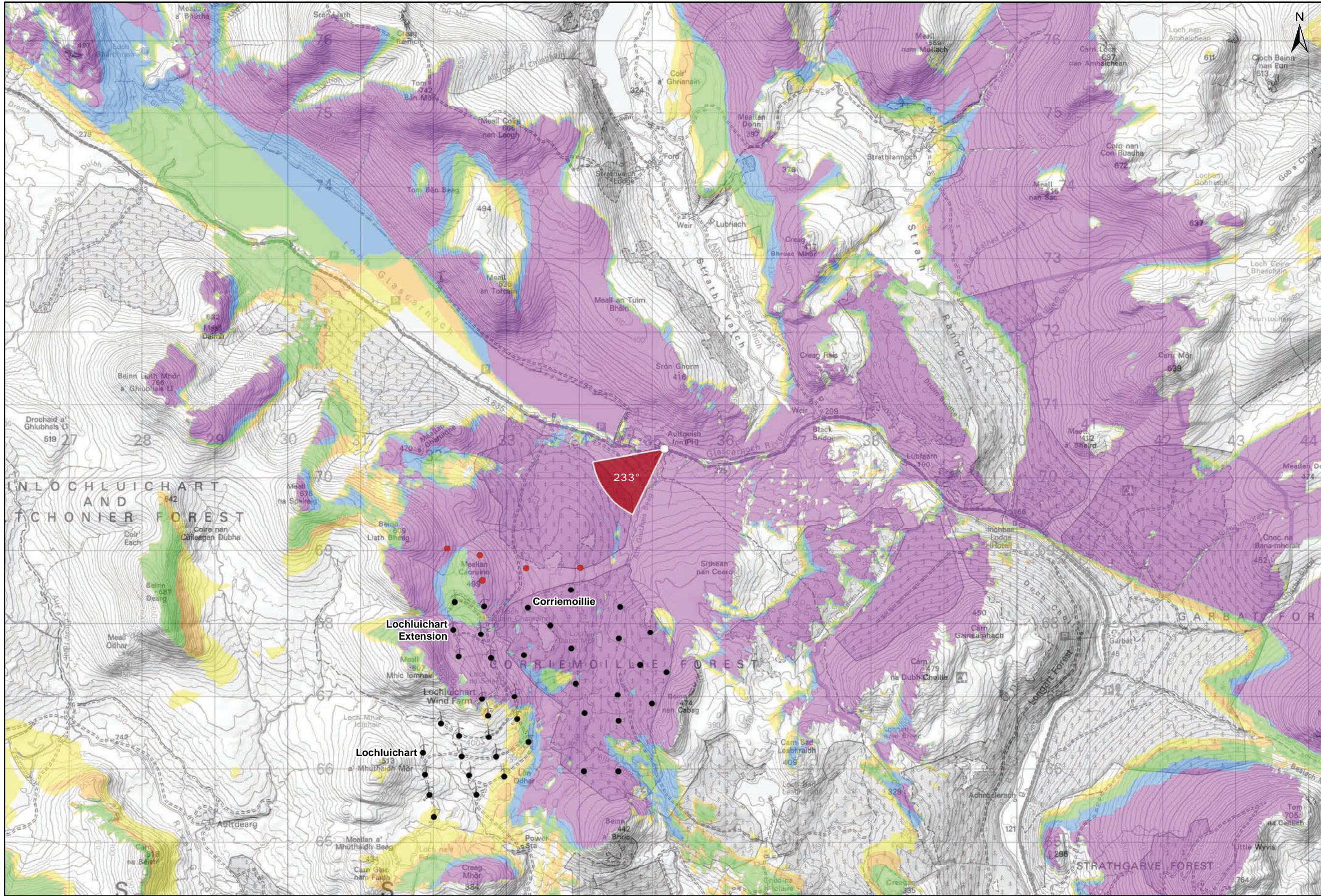
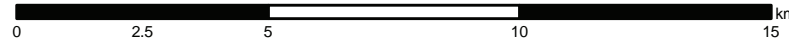
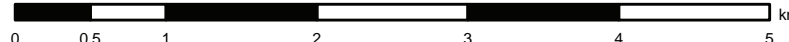


Viewpoint Location Plan Baseline Panorama
Scale: 1:150,000



Viewpoint Location Plan
Scale: 1:50,000 (Blade Tip ZTV)



Note:
1. **ZTV:** Created using ESRI ArcGIS 10.7.1 software using the following data and parameters:
Blade tip height: 149.9m
DTM Data: OS Terrain 5 DTM. Resampled to a 10m grid.
Observer height: 1.5m
No surface features, such as buildings or trees, were included in the analysis.
Earth curvature and light refraction has been included in calculations.

Legend:

- Proposed Turbines
- Cumulative Wind Farm Status
 - Cumulative Wind Turbines
 - Operational / Under Construction
 - Consented
 - Application
- Blade Tip ZTV
 - No. of Blade Tip Visible
 - 1
 - 2
 - 3
 - 4
 - 5
- Viewpoint
 - Viewpoint Location
 - 90° Field of View Viewpoint
 - 53.5° Field of View Viewpoint

Title:
Viewpoint 1: A835 Aultguish Inn

Lochluichart Wind Farm
Extension II

Source:
© Crown copyright and database rights 2019
Ordnance Survey 0100031673

Client:
Infinergy

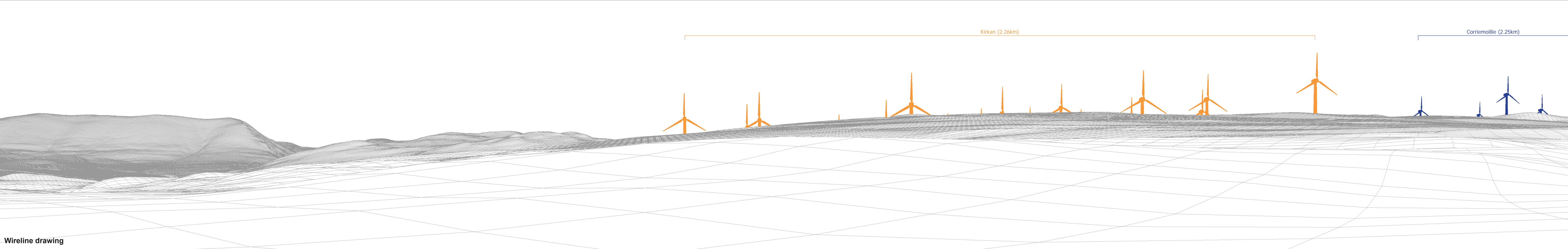
Drawn by: SH	Checked: JP
Date: 25/01/2021	Figure: 8.22a
Scale:	Revision No: 1

INFINERGY



Baseline photograph

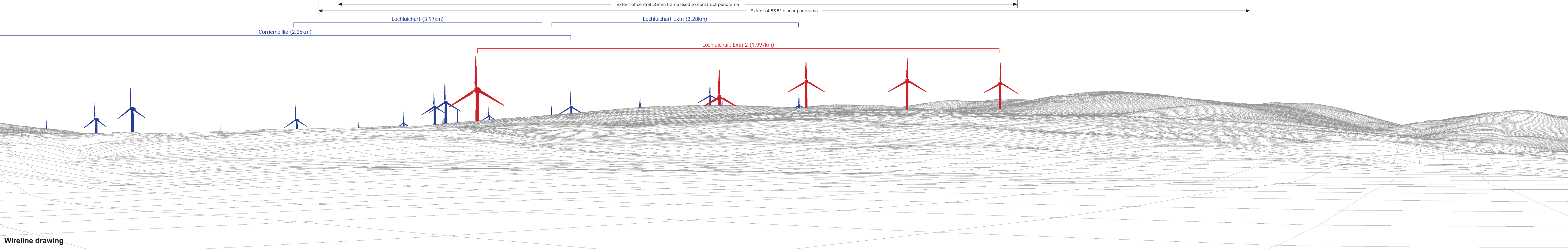
This image provides landscape and visual context only



Wireline drawing

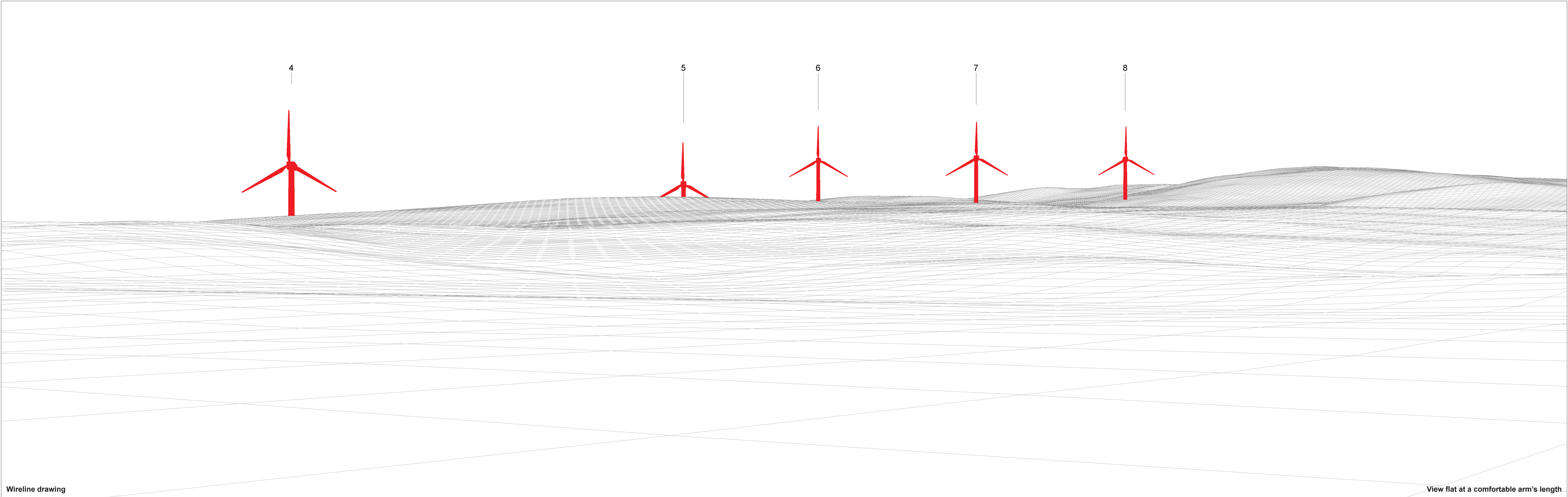
OS reference:	235166 E 870394 N	Horizontal field of view:	90° (cylindrical projection)	Camera:	Canon EOS 5D Mark II
Eye level:	228.98 m AOD	Principal distance	522 mm	Lens:	50mm (Canon EF 50mm f/1.4)
Direction of view:	143°			Camera height:	1.5 m AGL
Nearest turbine:	1.997 km			Date and time:	04/02/18, 10:02

Figure: 8.22b
Viewpoint 1: Aultguish Inn



OS reference:	235166 E 870394 N	Horizontal field of view:	90° (cylindrical projection)	Camera:	Canon EOS 5D Mark II
Eye level:	228.98 m AOD	Principal distance	522 mm	Lens:	50mm (Canon EF 50mm f/1.4)
Direction of view:	233°			Camera height:	1.5 m AGL
Nearest turbine:	1.997 km			Date and time:	04/02/18, 10:02

Figure: 8.22c
Viewpoint 1: Aultguish Inn



Wireline drawing

View flat at a comfortable arm's length



Photomontage

View flat at a comfortable arm's length

OS reference:	235166 E 870394 N	Horizontal field of view:	53.5° (planar projection)	Camera:	Canon EOS 5D Mark II
Eye level:	228.98 m AOD	Principal distance	812.5 mm	Lens:	50mm (Canon EF 50mm f/1.4)
Direction of view:	233°	Paper size:	841 x 297 mm (half A1)	Camera height:	1.5 m AGL
Nearest turbine:	1.997 km	Correct printed image size:	820 x 260 mm	Date and time:	04/02/18, 10:02

Figure: 8.22e
Viewpoint 1: Aultguish Inn