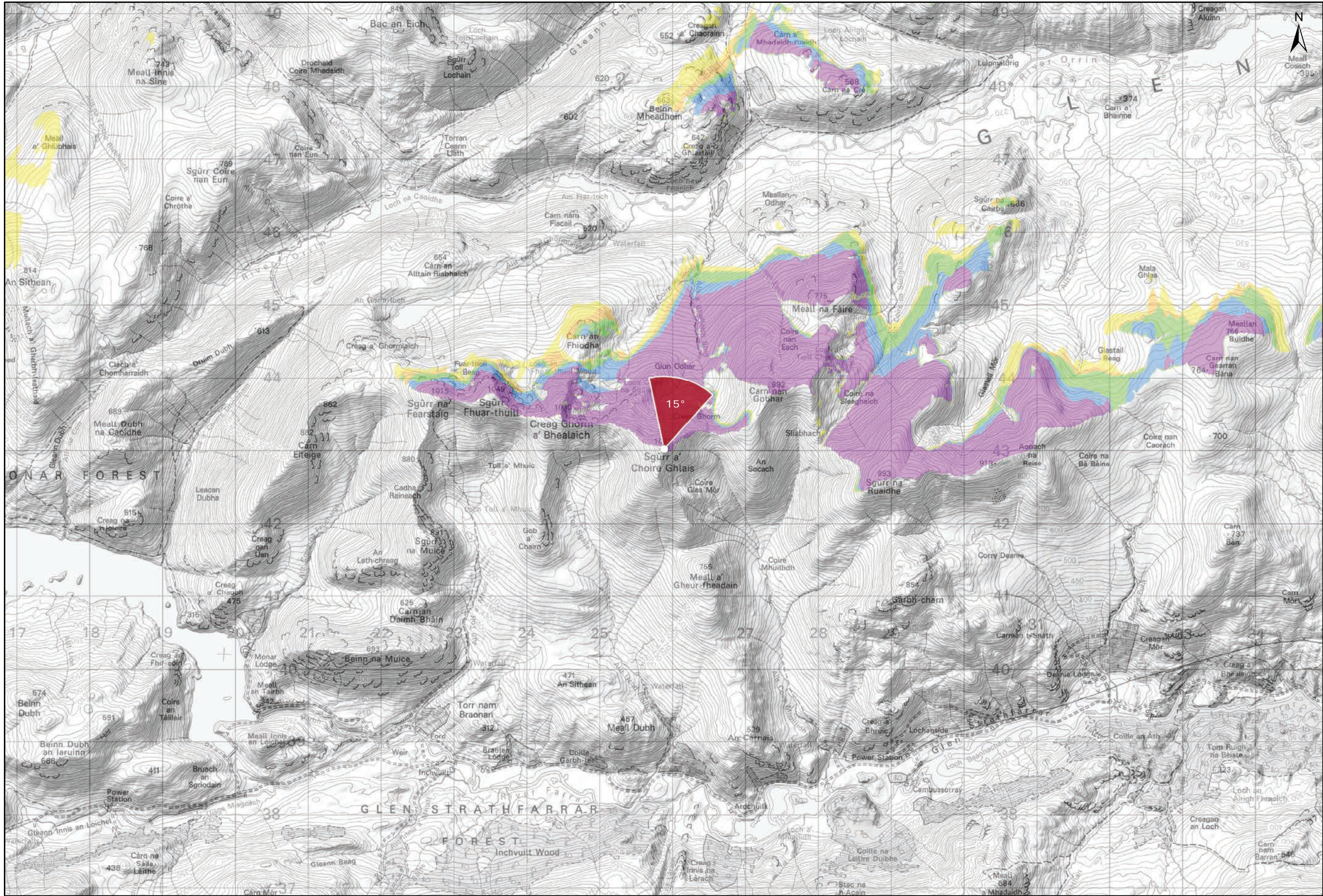


Viewpoint Location Plan Baseline Panorama
Scale: 1:150,000



Viewpoint Location Plan
Scale: 1:50,000 (Blade Tip ZTV)

Note:
1. **ZTV:** Created using ESRI ArcGIS 10.7.1 software using the following data and parameters:
Blade tip height: 149.9m
DTM Data: OS Terrain 5 DTM. Resampled to a 10m grid.
Observer height: 1.5m
No surface features, such as buildings or trees, were included in the analysis.
Earth curvature and light refraction has been included in calculations.

Legend:

- Proposed Turbines
- Cumulative Wind Farm Status
 - Cumulative Wind Turbines
 - Operational / Under Construction
 - Consented
 - Application
- Blade Tip ZTV
- No. of Blade Tip Visible
 - 1
 - 2
 - 3
 - 4
 - 5
- Viewpoint
 - Viewpoint Location
 - 90° Field of View Viewpoint
 - 53.5° Field of View Viewpoint

Title:
Viewpoint 11: Sgurr a Choire Ghlais

Lochluichart Wind Farm Extension II

Source:
© Crown copyright and database rights 2019
Ordnance Survey 0100031673

Client:
Infinergy

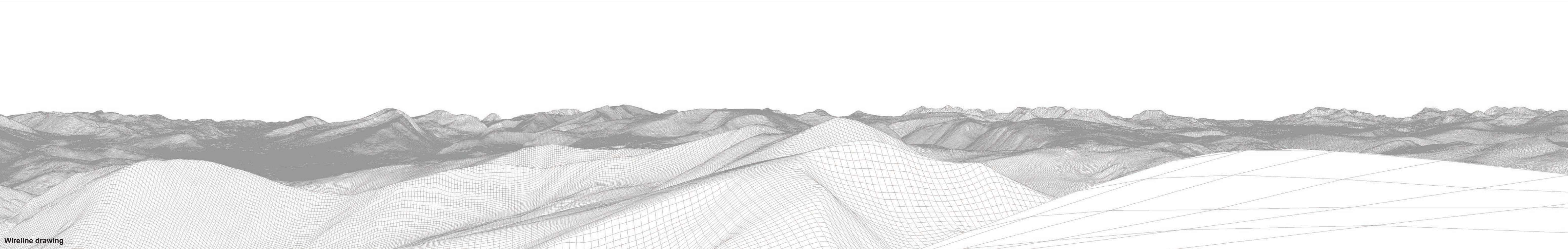
Drawn by: SH	Checked: JP
Date: 25/01/2021	Figure: 8.32a
Scale:	Revision No: 1

INFINERGY



Baseline photograph

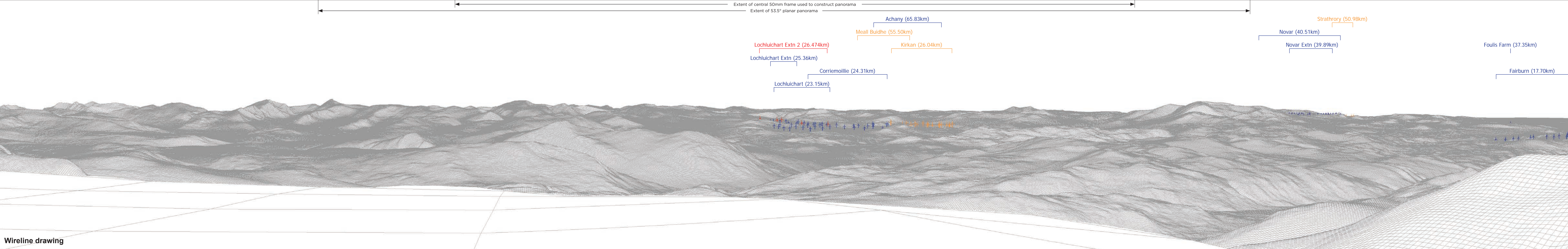
This image provides landscape and visual context only



Wireline drawing

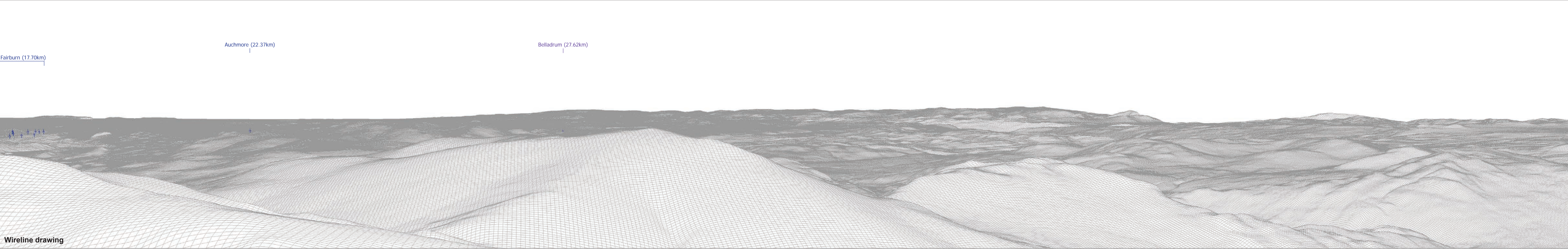
OS reference:	225881 E 843006 N	Horizontal field of view:	90° (cylindrical projection)	Camera:	Canon EOS 6D
Eye level:	1083.3 m AOD	Principal distance	522 mm	Lens:	50mm (Canon EF 50mm f/1.4)
Direction of view:	285°			Camera height:	1.5 m AGL
Nearest turbine:	26.474 km			Date and time:	24/05/18, 12:24

Figure: 8.32b
Viewpoint 11: Sgurr a Choire Ghlais



OS reference:	225881 E 843006 N	Horizontal field of view:	90° (cylindrical projection)	Camera:	Canon EOS 6D
Eye level:	1083.3 m AOD	Principal distance	522 mm	Lens:	50mm (Canon EF 50mm f/1.4)
Direction of view:	15°			Camera height:	1.5 m AGL
Nearest turbine:	26.474 km			Date and time:	24/05/18, 12:24

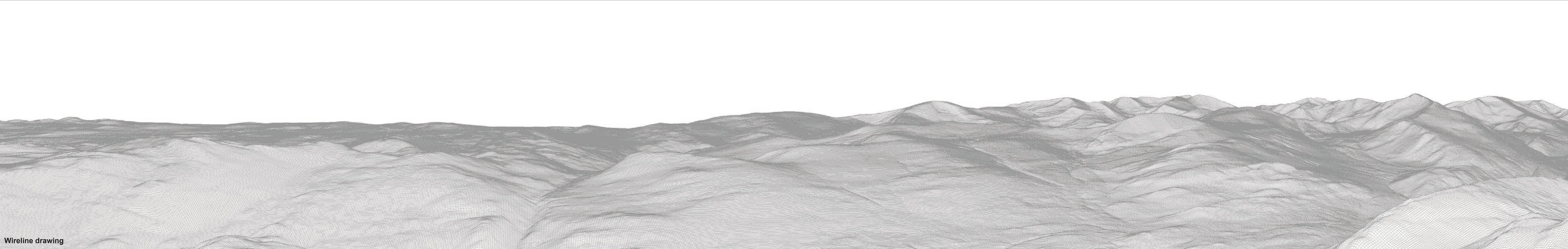
Figure: 8.32c
Viewpoint 11: Sgurr a Choire Ghlais





Baseline photograph

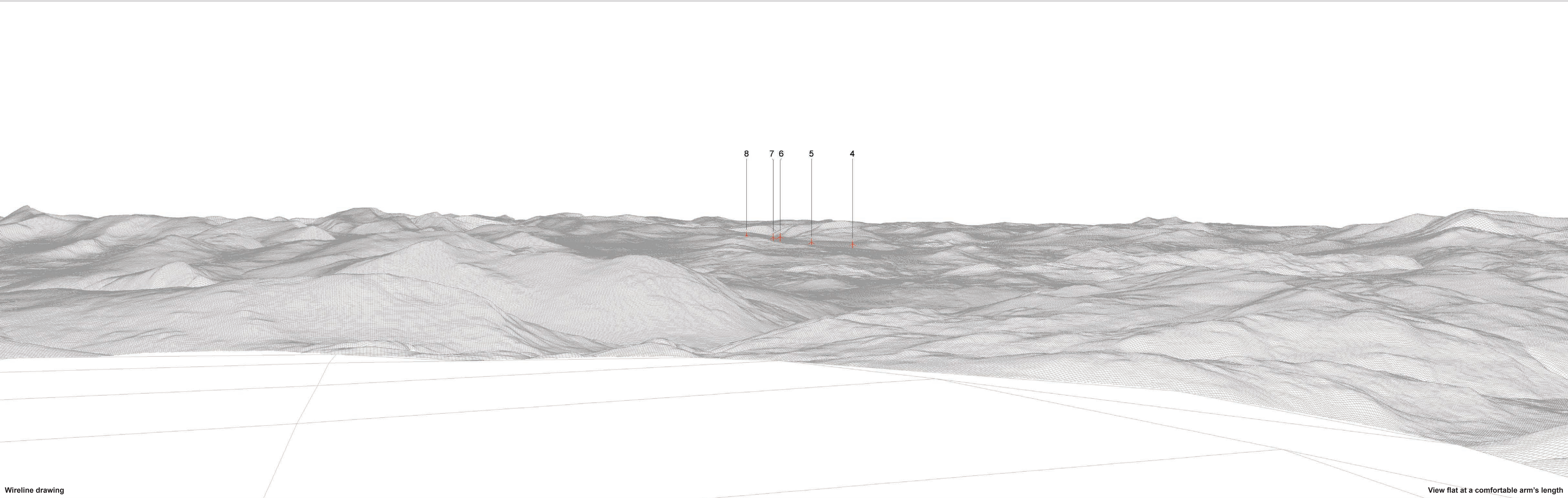
This image provides landscape and visual context only



Wireline drawing

OS reference:	225881 E 843006 N	Horizontal field of view:	90° (cylindrical projection)	Camera:	Canon EOS 6D
Eye level:	1083.3 m AOD	Principal distance	522 mm	Lens:	50mm (Canon EF 50mm f/1.4)
Direction of view:	195°			Camera height:	1.5 m AGL
Nearest turbine:	26.474 km			Date and time:	24/05/18, 12:24

Figure: 8.32e
Viewpoint 11: Sgurr a Choire Ghlais



Wireline drawing

View flat at a comfortable arm's length

OS reference: 225881 E 843006 N		Horizontal field of view: 53.5° (planar projection)		Camera: Canon EOS 6D	
Eye level: 1083.3 m AOD		Principal distance: 812.5 mm		Lens: 50mm (Canon EF 50mm f/1.4)	
Direction of view: 15°		Paper size: 841 x 297 mm (half A1)		Camera height: 1.5 m AGL	
Nearest turbine: 26.474 km		Correct printed image size: 820 x 260 mm		Date and time: 24/05/18, 12:24	

Figure: 8.32f
Viewpoint 11: Sgurr a Choire Ghlais



Photomontage (operational turbines have been montaged in this view)

View flat at a comfortable arm's length

OS reference:	225881 E 843006 N	Horizontal field of view:	53.5° (planar projection)	Camera:	Canon EOS 6D	Figure: 8.32g Viewpoint 11: Sgurr a Choire Ghlais
Eye level:	1083.3 m AOD	Principal distance	812.5 mm	Lens:	50mm (Canon EF 50mm f/1.4)	
Direction of view:	15°	Paper size:	841 x 297 mm (half A1)	Camera height:	1.5 m AGL	
Nearest turbine:	26.474 km	Correct printed image size:	820 x 260 mm	Date and time:	24/05/18, 12:24	