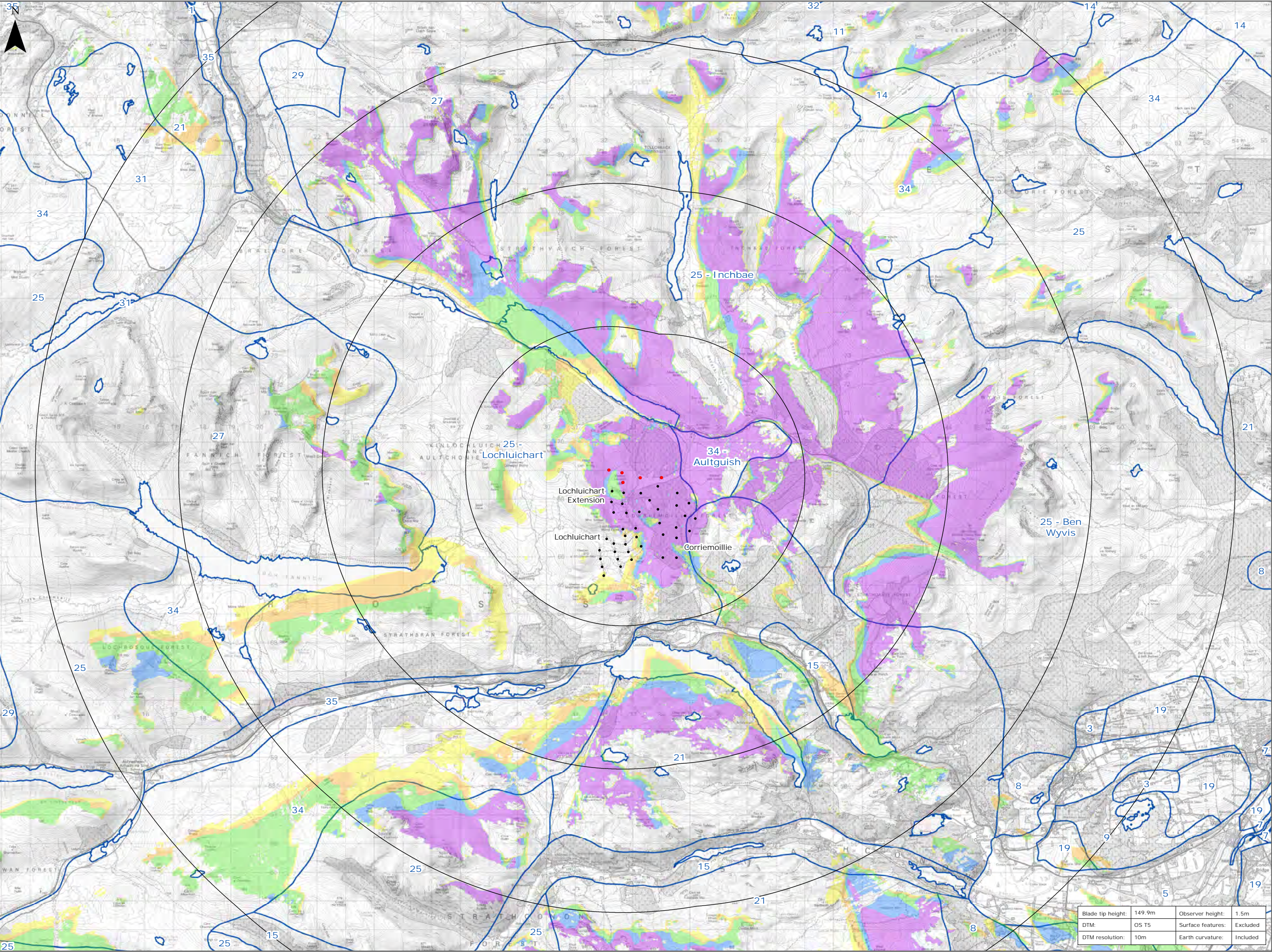


Figure 8.9: Blade Tip ZTV & Landscape Character (15km)



Legend:

- Proposed Turbines
- 5km Distance Radii
- Operational Turbines at Lochluichart, Lochluichart Extension and Corriemollie

Blade Tip ZTV

No. of Blade Tip Visible

- 1
- 2
- 3
- 4
- 5

SNH Landscape Character Assessment (1998)

- 1 Coastal Island
- 3 Crofting
- 5 Enclosed Farmed Landscapes
- 7 Enclosed Firth
- 8 Forest Edge Farming
- 9 Forested Backdrop
- 11 Irregular Massif
- 13 Loch Island
- 14 Moorland Slopes and Hills
- 15 Narrow Farmed Strath
- 19 Open Farmed Slopes
- 21 Rocky Moorland
- 25 Rounded Hills
- 27 Rugged Mountain Massif
- 29 Sloping Terrace Moorland
- 31 Smooth Moorland
- 32 Strath
- 34 Undulating Moorland
- 35 Wide Farmed Strath

Title: Blade Tip ZTV & Landscape Character (15km)

Lochluichart Wind Farm Extension II

Source: © Crown copyright and database rights 2019 Ordnance Survey 0100031673. Contains SNH information licensed under the Open Government Licence v3.0.

Client: Infinergy

Drawn by: LA	Checked: JP
Date: 22/01/2021	Figure: 8.9
Scale: 0 1 2 km	Revision No: 1

INFINERGY