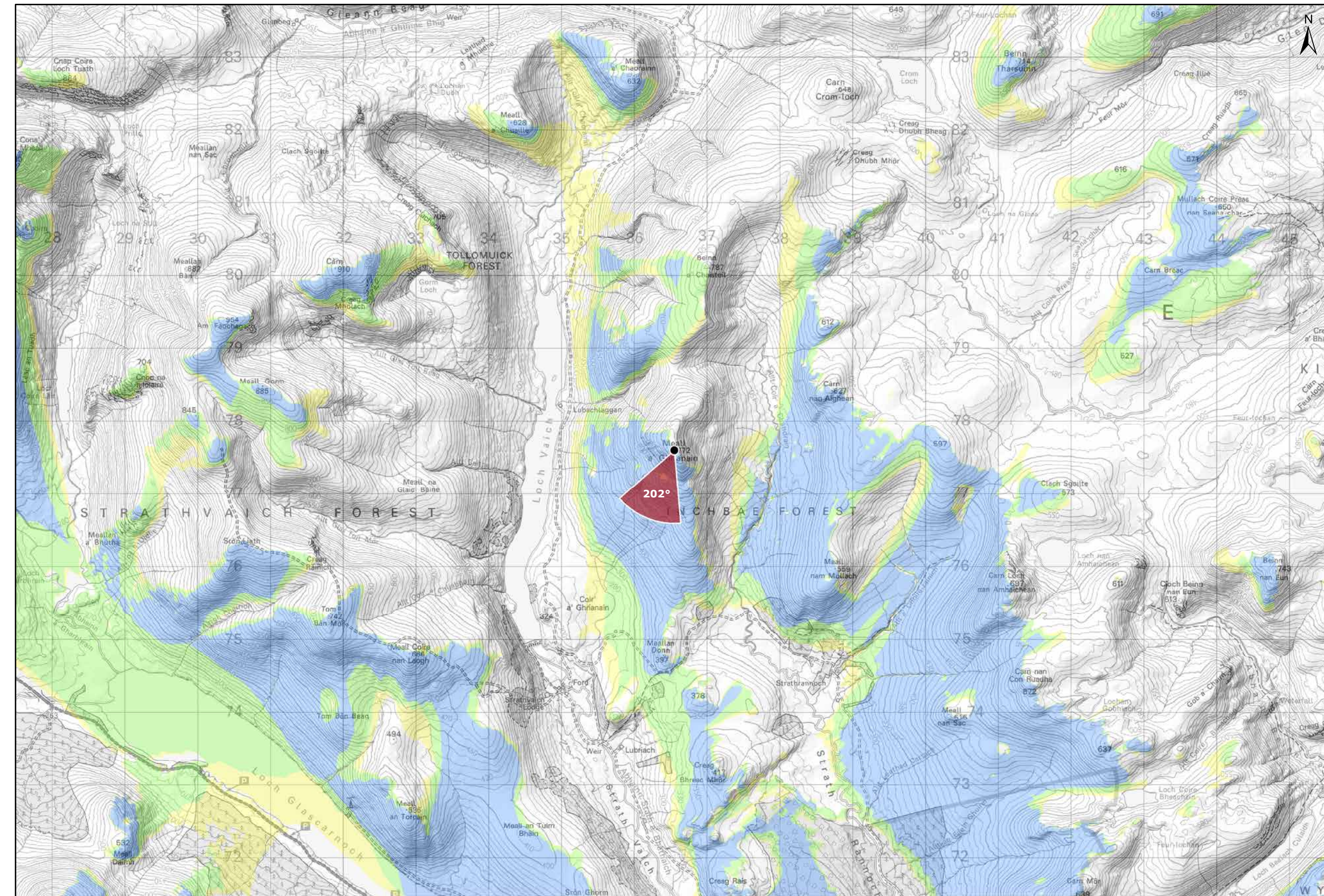


Viewpoint Location Plan Baseline Panorama
Scale: 1:150,000



Viewpoint Location Plan
Scale: 1:50,000 (Blade Tip ZTV)

Note:
1. ZTV: Created using ESRI ArcGIS 10.7 software using the following data and parameters:
Blade tip height: 133m
DTM Data: OS Terrain 5 DTM. Resampled to a 10m grid.
Observer height: 1.5m
No surface features, such as buildings or trees, were included in the analysis.
Earth curvature and light refraction has been included in calculations.

Legend:

- Amended Turbine Scheme
- Viewpoint Location
- 90° Field of View Viewpoint
- 53.5° Field of View Viewpoint
- Cumulative Wind Turbines

Wind Farm Status

- Appeal / Application
- Consented
- Operational / Under Construction

Zone of Theoretical Visibility

No. of Blade Tips Theoretically Visible

- 1 - 2
- 3 - 4
- 5

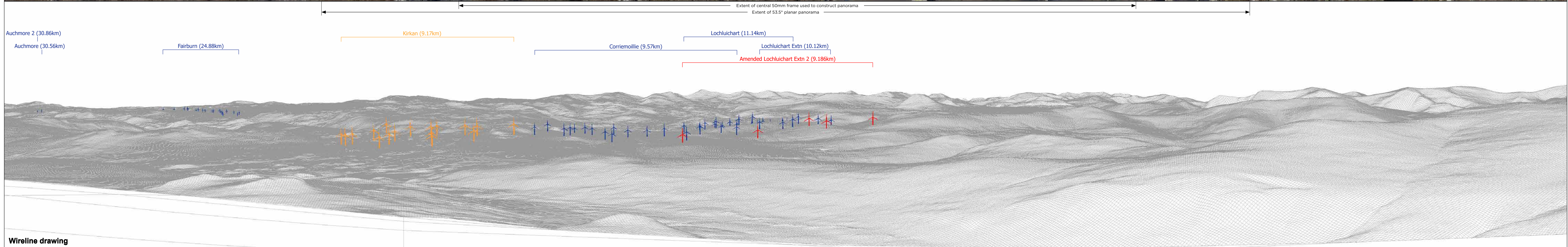
Title: Figure 9.28a - Amended Viewpoint 8: Beinn a Chaisleil	
Amended Lochluichart Wind Farm Extension II Scheme	
Source: © Crown copyright and database rights (2018) OS (license No 0100031673)	
Client: Infinergy	
Drawn by: TH	Checked: JW
Date: 16/07/2019	Figure: 9.28a
Scale:	Revision No: B

INFINERGY



Baseline photograph

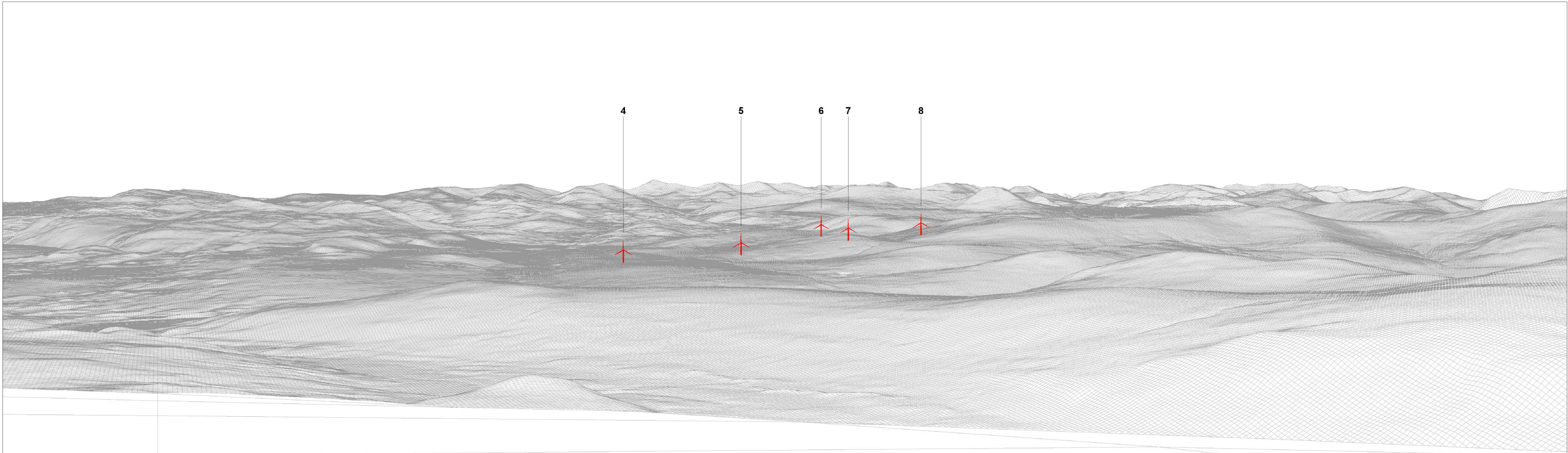
This image provides landscape and visual context only



Wireline drawing

OS reference:	236550 E 877594 N	Horizontal field of view:	90° (cylindrical projection)	Camera:	Canon EOS 6D
Eye level:	774.47 m AOD	Principal distance	522 mm	Lens:	50mm (Canon EF 50mm f/1.4)
Direction of view:	202°			Camera height:	1.5 m AGL
Nearest turbine:	9.186 km			Date and time:	04/05/17, 09:17

Figure: 9.28c - Amended Viewpoint 8: Beinn a Chaisteil



Wireline drawing

View flat at a comfortable arm's length

OS reference: 236550 E 877594 N
Eye level: 774.47 m AOD
Direction of view: 292°
Nearest turbine: 9.186 km

Horizontal field of view: 53.5° (planar projection)
Principal distance: 812.5 mm
Paper size: 841 x 297 mm (half A1)
Correct printed image size: 820 x 260 mm

Camera: Canon EOS 6D
Lens: 50mm (Canon EF 50mm f/1.4)
Camera height: 1.5 m AGL
Date and time: 04/05/17, 09:17

Figure: 9.28f - Amended
Viewpoint 8: Beinn a Chaisteil



Photomontage

View flat at a comfortable arm's length

OS reference: 236550 E 877594 N	Horizontal field of view: 53.5° (planar projection)	Camera: Canon EOS 6D	
Eye level: 774.47 m AOD	Principal distance: 812.5 mm	Lens: 50mm (Canon EF 50mm f/1.4)	
Direction of view: 292°	Paper size: 841 x 297 mm (half A1)	Camera height: 1.5 m AGL	
Nearest turbine: 9.186 km	Correct printed image size: 820 x 260 mm	Date and time: 04/05/17, 09:17	Figure: 9.28g - Amended Viewpoint 8: Beinn a Chaisteil