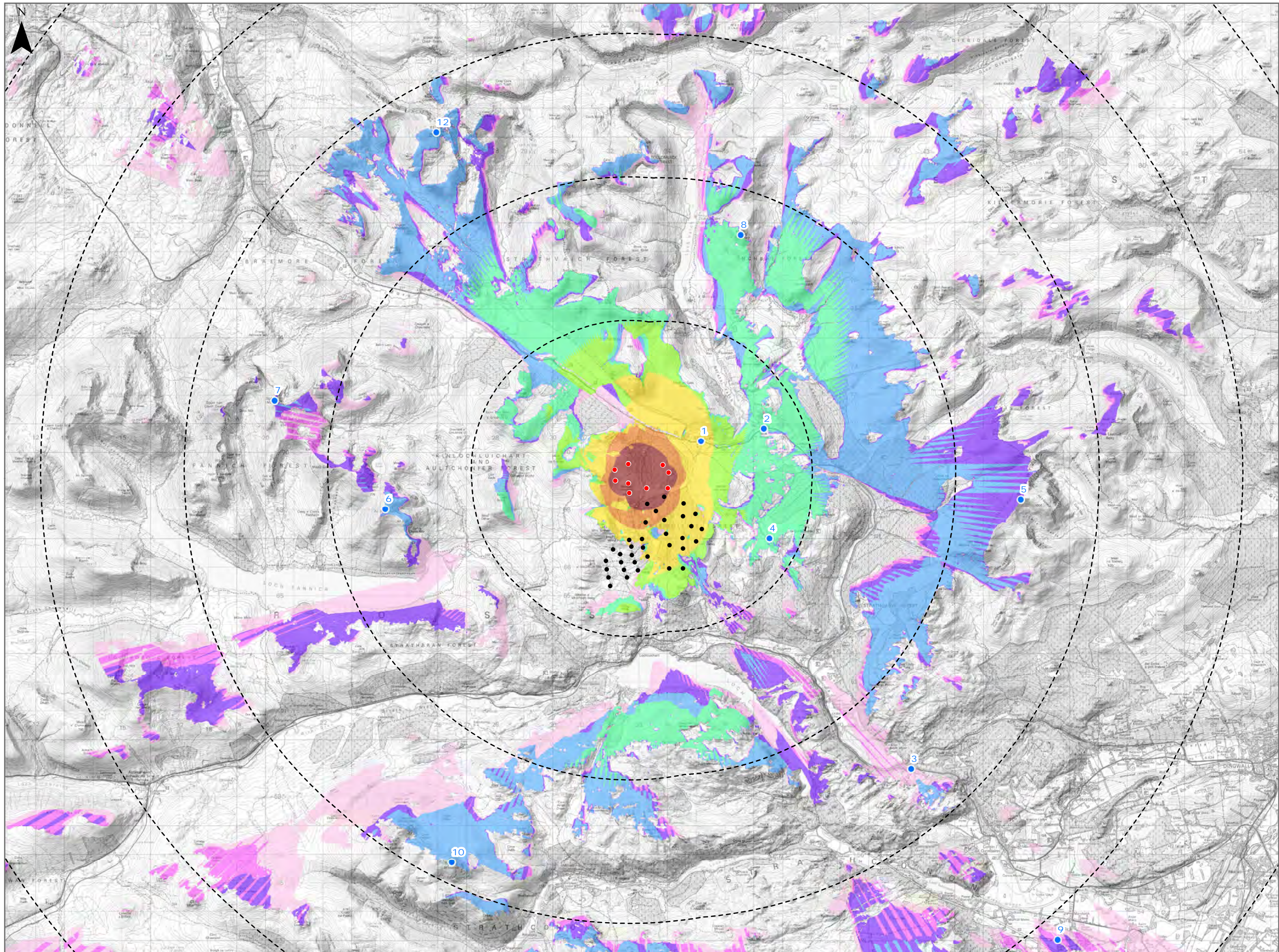


Figure 9.8b: Horizontal Angle ZTV (15km)



Legend:

- Proposed Turbines
- 5km Distance Radii
- Operational Turbines at Lochluichart, Lochluichart Extension & Corriemoillie

Horizontal Angle ZTV*
Angle of visibility (degrees)

- 0 - 1
- 1 - 2
- 2 - 5
- 5 - 10
- 10 - 20
- 20 - 30
- 30 - 60
- 60 - 90
- Over 90

● Viewpoint Locations

- 1 - A835 Aultguish Inn
- 2 - A835 Black Bridge Road
- 3 - A835 Garve bridge
- 4 - Old Drovers Route, Corriemoillie
- 5 - Ben Wyvis (Glas Leathad Mor)
- 6 - An Colleachan
- 7 - Sgurr Mòr
- 8 - Beinn a Chaisteil (Meall a Ghrianain)
- 9 - Avenue of Fairburn Estate
- 10 - Sgurr A Mhuillinn
- 12 - Beinn Dearg

Note:
* The horizontal angle ZTV measures how much of the horizontal field of view is occupied by the Development. It is calculated from a grid of receptors in the study area and measures the angle from the furthest leftmost to furthest rightmost visible points of the development.

For Full ZTV parameters see Figure 9.6

Title:	
Horizontal Angle ZTV (15km)	
Lochluichart Wind Farm Extension II	
Source: © Crown copyright and database rights (2018) OS (license No 0100031673)	
Client: Infinergy	
Drawn by: MJF	Checked: JW
Date: 09/10/2018	Figure: 9.8b
Scale: 0 1 2 km	Revision No: B