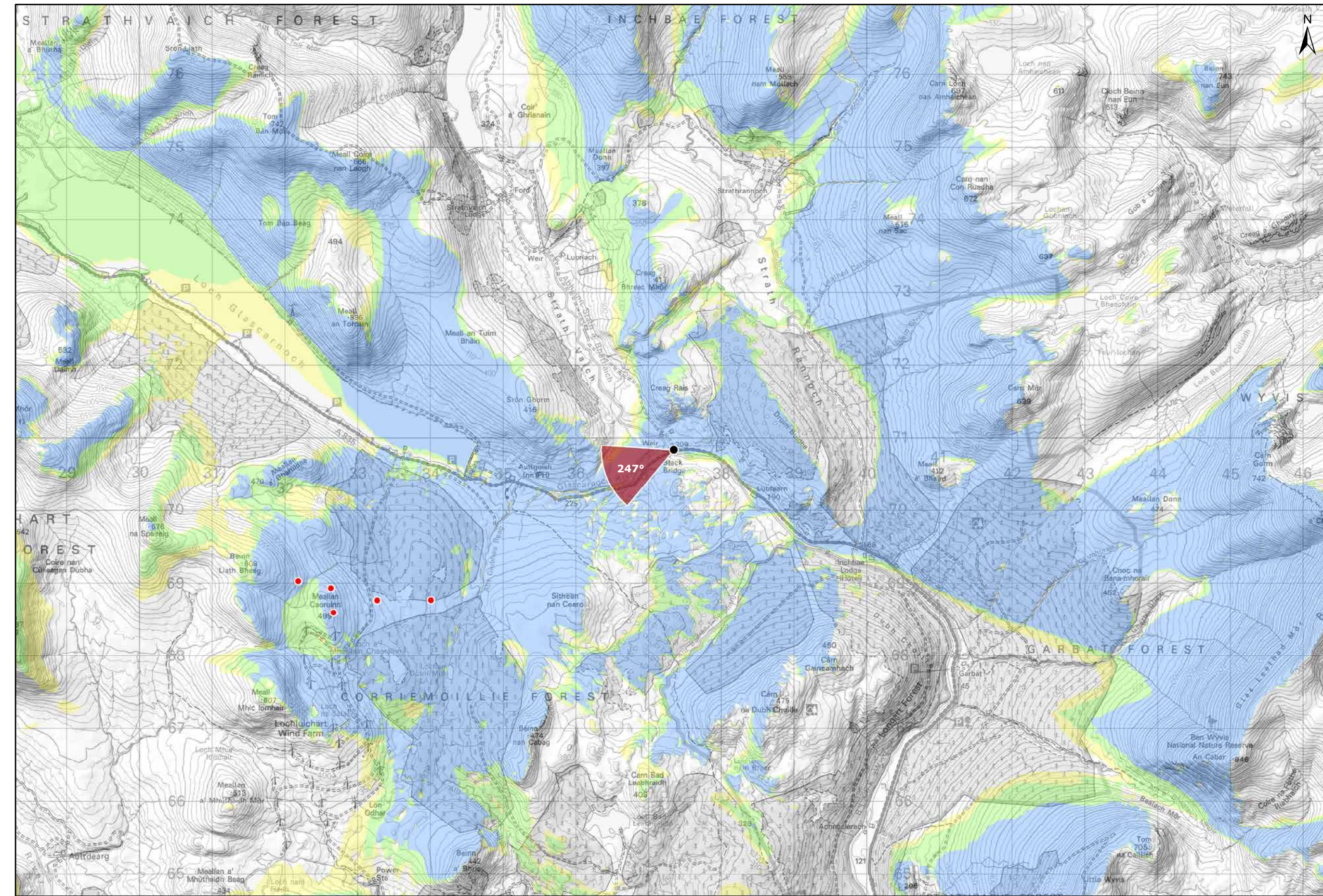


Viewpoint Location Plan Baseline Panorama  
Scale: 1:150,000



Viewpoint Location Plan  
Scale: 1:50,000 (Blade Tip ZTV)

**Note:**  
1. ZTV: Created using ESRI ArcGIS 10.7 software using the following data and parameters:  
Blade tip height: 133m  
DTM Data: OS Terrain 5 DTM. Resampled to a 10m grid.  
Observer height: 1.5m  
No surface features, such as buildings or trees, were included in the analysis.  
Earth curvature and light refraction has been included in calculations.

**Legend:**

- Amended Turbine Scheme
- Viewpoint Location
- 90° Field of View Viewpoint
- 53.5° Field of View Viewpoint
- Cumulative Wind Turbines

**Wind Farm Status**

- Appeal / Application
- Consented
- Operational / Under Construction

**Zone of Theoretical Visibility**

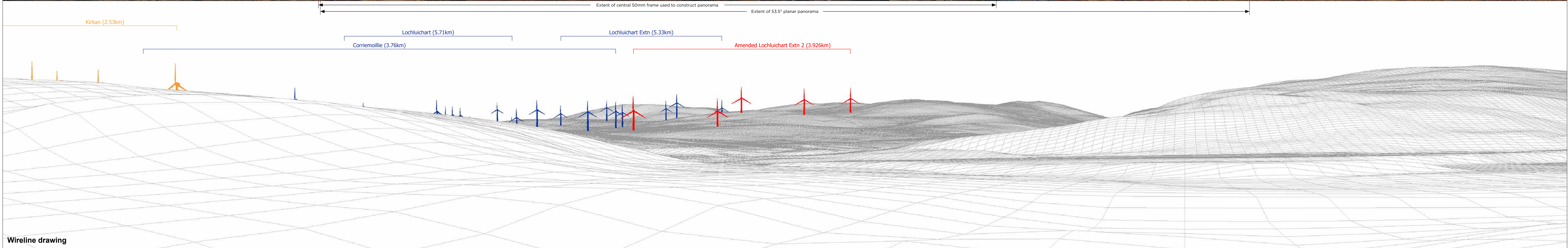
No. of Blade Tips Theoretically Visible

- 1 - 2
- 3 - 4
- 5

<b>Title:</b> Figure 9.22a - Amended Viewpoint 2: A835 Black Bridge	
<b>Amended Lochluichart Wind Farm Extension II Scheme</b>	
<b>Source:</b> © Crown copyright and database rights (2018) OS (license No 0100031673)	
<b>Client:</b> Infinergy	
<b>Drawn by:</b> TH	<b>Checked:</b> JW
<b>Date:</b> 16/07/2019	<b>Figure:</b> 9.22a
<b>Scale:</b>	<b>Revision No:</b> B

**INFINERGY**





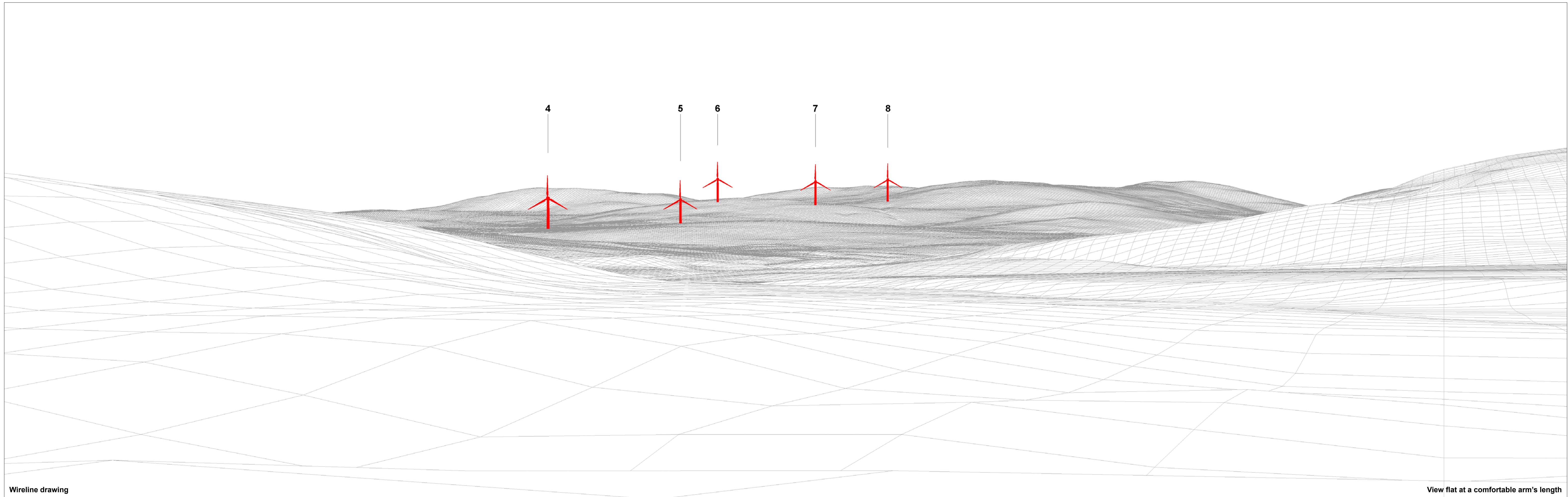
OS reference: 237349 E 870830 N  
 Eye level: 212.64 m AOD  
 Direction of view: 247°  
 Nearest turbine: 3.926 km

Horizontal field of view: 90° (cylindrical projection)  
 Principal distance: 522 mm

Camera: Canon EOS 5D Mark II  
 Lens: 50mm (Canon EF 50mm f/1.4)  
 Camera height: 1.5 m AGL  
 Date and time: 04/02/18, 10:22

Figure: 9.22b - Amended Viewpoint 2: A835, Black Water Bridge





Wireline drawing

View flat at a comfortable arm's length

OS reference: 237349 E 870830 N  
Eye level: 212.64 m AOD  
Direction of view: 247°  
Nearest turbine: 3.926 km

Horizontal field of view: 53.5° (planar projection)  
Principal distance: 812.5 mm  
Paper size: 841 x 297 mm (half A1)  
Correct printed image size: 820 x 260 mm

Camera: Canon EOS 5D Mark II  
Lens: 50mm (Canon EF 50mm f/1.4)  
Camera height: 1.5 m AGL  
Date and time: 04/02/18, 10:22

Figure 9.22c - Amended  
Viewpoint 2: A835, Black Water Bridge





Photomontage (operational turbines have been montaged in this view)

View flat at a comfortable arm's length

<b>OS reference:</b>	237349 E 870830 N	<b>Horizontal field of view:</b>	53.5° (planar projection)	<b>Camera:</b>	Canon EOS 5D Mark II
<b>Eye level:</b>	212.64 m AOD	<b>Principal distance</b>	812.5 mm	<b>Lens:</b>	50mm (Canon EF 50mm f/1.4)
<b>Direction of view:</b>	247°	<b>Paper size:</b>	841 x 297 mm (half A1)	<b>Camera height:</b>	1.5 m AGL
<b>Nearest turbine:</b>	3.926 km	<b>Correct printed image size:</b>	820 x 260 mm	<b>Date and time:</b>	04/02/18, 10:22

**Figure: 9.22d - Amended  
Viewpoint 2: A835, Black Water Bridge**