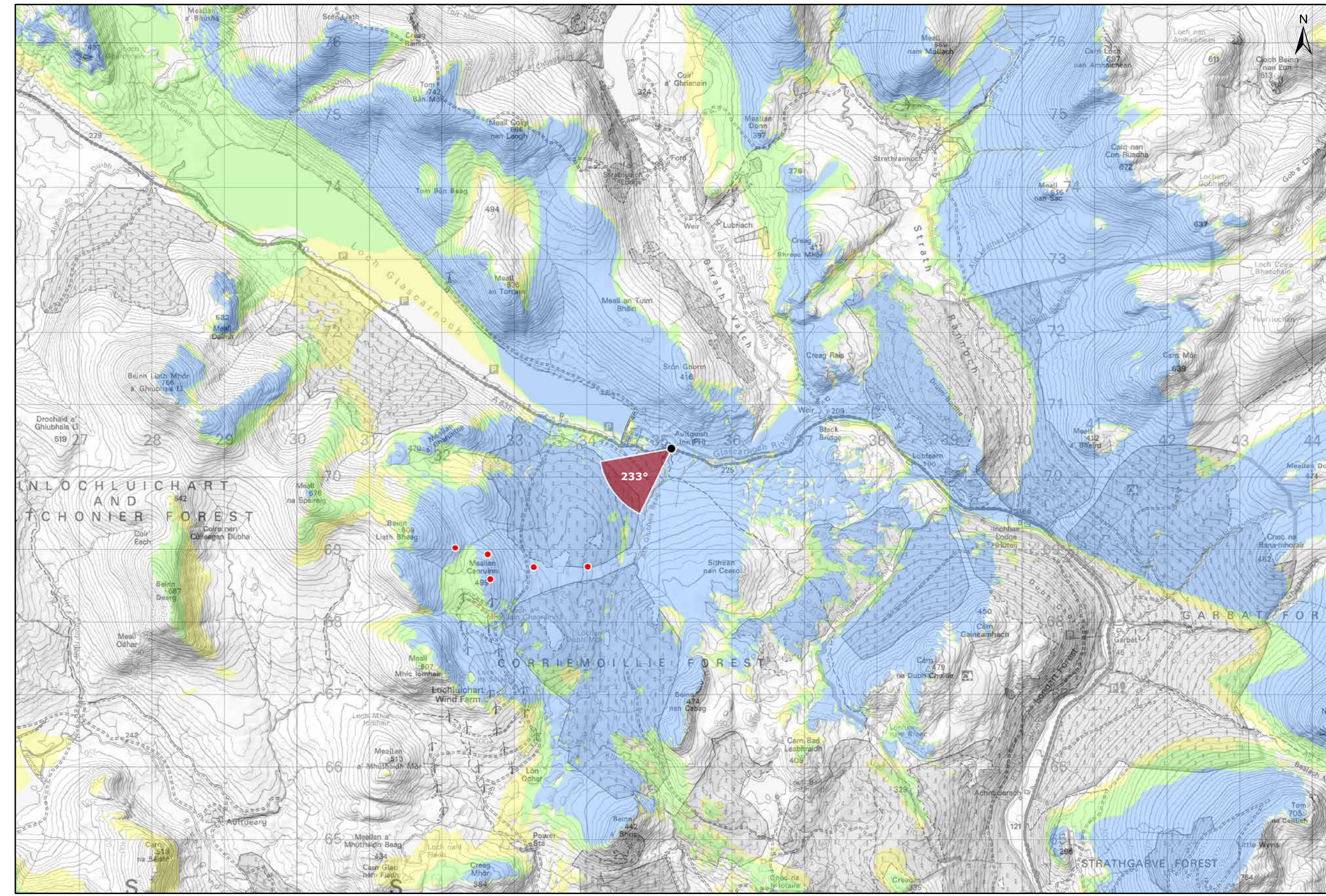


Viewpoint Location Plan Baseline Panorama
Scale: 1:150,000



Viewpoint Location Plan
Scale: 1:50,000 (Blade Tip ZTV)

Note:
1. ZTV: Created using ESRI ArcGIS 10.7 software using the following data and parameters:
Blade tip height: 133m
DTM Data: OS Terrain 5 DTM. Resampled to a 10m grid.
Observer height: 1.5m
No surface features, such as buildings or trees, were included in the analysis.
Earth curvature and light refraction has been included in calculations.

- Legend:**
- Amended Turbine Scheme
 - Viewpoint Location
 - 90° Field of View Viewpoint
 - 53.5° Field of View Viewpoint
 - Status of Wind Turbines
 - Appeal / Application
 - Consented
 - Operational / Under Construction
- Zone of Theoretical Visibility**
- No. of Blade Tips Theoretically Visible**
- 1 - 2
 - 3 - 4
 - 5

Title: Figure 9.21a - Amended Viewpoint 1: A835 Aultgush Inn

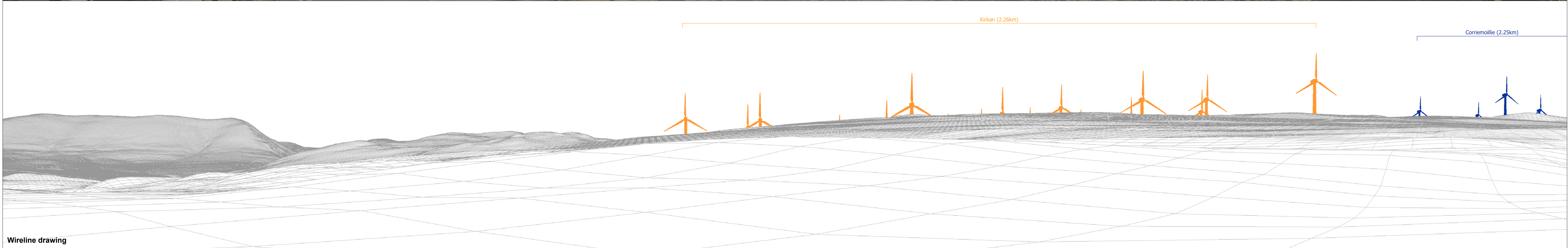
Amended Lochluichart Wind Farm Extension II Scheme

Source:
© Crown copyright and database rights (2018)
OS license No 0100031673

Client: Infinergy

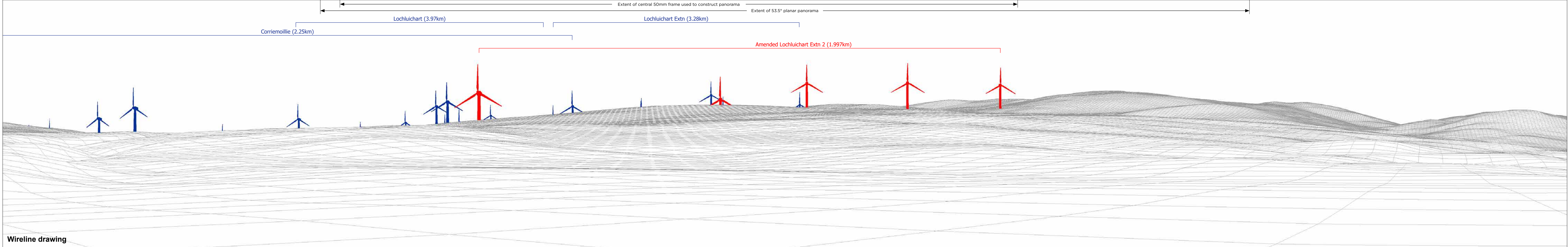
Drawn by: TH	Checked: JW
Date: 16/07/2019	Figure: 9.21a
Scale:	Revision No: B

INFINERGY



OS reference: 235166 E 870394 N	Horizontal field of view: 90° (cylindrical projection)	Camera: Canon EOS 5D Mark II
Eye level: 228.98 m AOD	Principal distance: 522 mm	Lens: 50mm (Canon EF 50mm f/1.4)
Direction of view: 143°		Camera height: 1.5 m AGL
Nearest turbine: 1.997 km		Date and time: 04/02/18, 10:02

Figure: 9.21b - Amended Viewpoint 1: Aultguish Inn

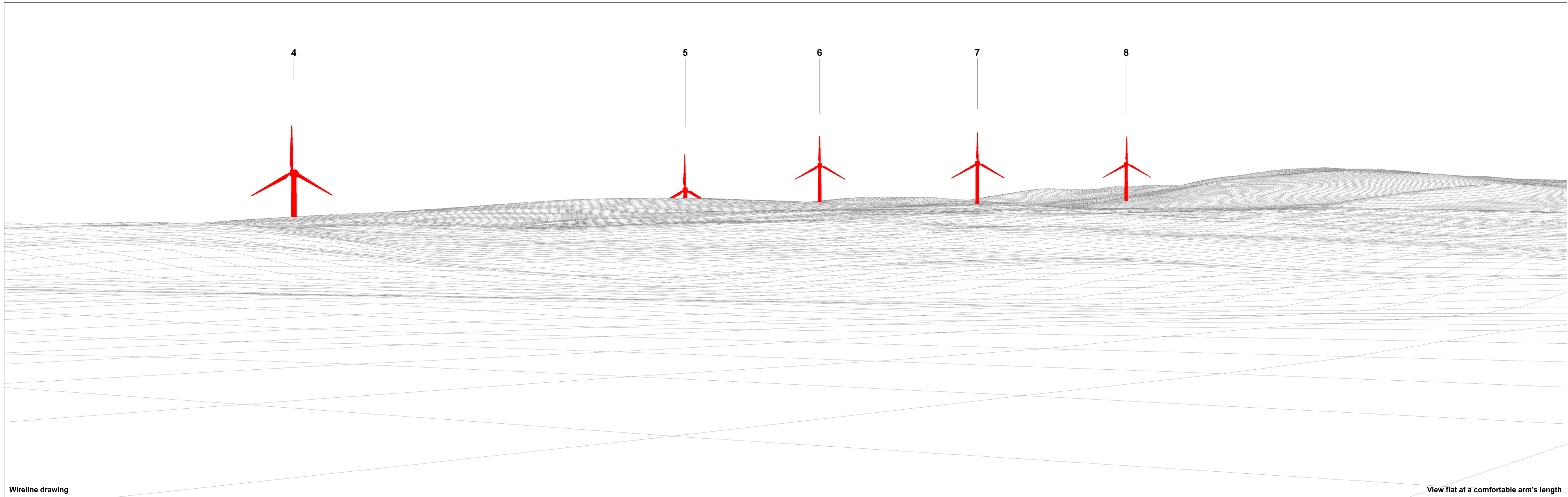


OS reference: 235166 E 870394 N
 Eye level: 228.98 m AOD
 Direction of view: 233°
 Nearest turbine: 1.997 km

Horizontal field of view: 90° (cylindrical projection)
 Principal distance: 522 mm

Camera: Canon EOS 5D Mark II
 Lens: 50mm (Canon EF 50mm f/1.4)
 Camera height: 1.5 m AGL
 Date and time: 04/02/18, 10:02

Figure: 9.21c - Amended Viewpoint 1: Aultguish Inn



Wireline drawing

View flat at a comfortable arm's length

OS reference: 235166 E 870394 N
Eye level: 228.98 m AOD
Direction of view: 233°
Nearest turbine: 1.997 km

Horizontal field of view: 53.5° (planar projection)
Principal distance: 812.5 mm
Paper size: 841 x 297 mm (half A1)
Correct printed image size: 820 x 260 mm

Camera: Canon EOS 5D Mark II
Lens: 50mm (Canon EF 50mm f/1.4)
Camera height: 1.5 m AGL
Date and time: 04/02/18, 10:02

Figure: 9.21d - Amended
Viewpoint 1: Aultguish Inn



Photomontage

View flat at a comfortable arm's length

OS reference: 235166 E 870394 N	Horizontal field of view: 53.5° (planar projection)	Camera: Canon EOS 5D Mark II
Eye level: 228.98 m AOD	Principal distance: 812.5 mm	Lens: 50mm (Canon EF 50mm f/1.4)
Direction of view: 233°	Paper size: 841 x 297 mm (half A1)	Camera height: 1.5 m AGL
Nearest turbine: 1.997 km	Correct printed image size: 820 x 260 mm	Date and time: 04/02/18, 10:02

Figure: 9.21e - Amended Viewpoint 1: Aultguish Inn