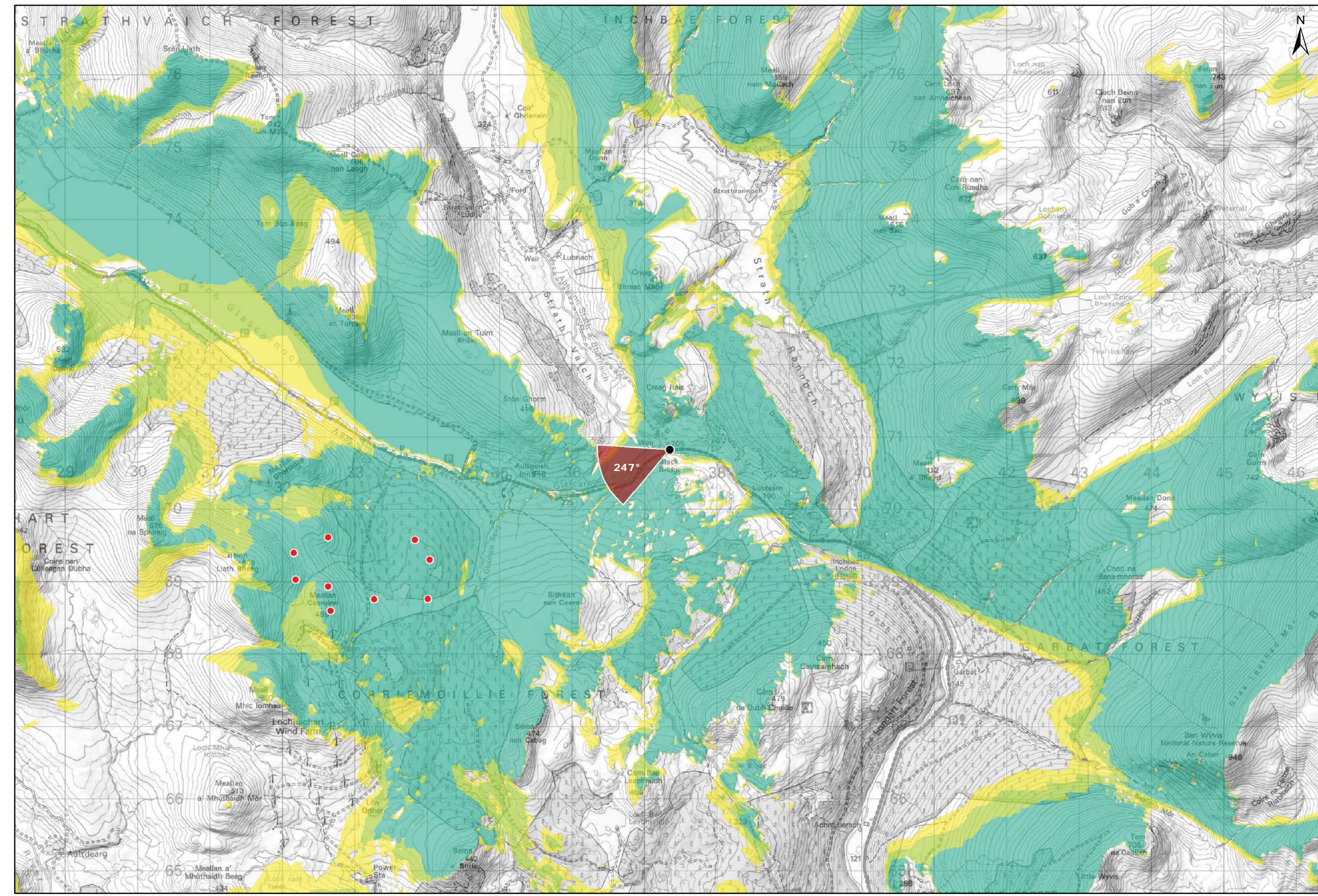


Viewpoint Location Plan Baseline Panorama
Scale: 1:150,000



Viewpoint Location Plan
Scale: 1:50,000 (Blade Tip ZTV)

Note:
1. ZTV: Created using ESRI ArcGIS 10.5 software using the following data and parameters:
Blade tip height: 133m
DTM Data: OS Terrain 5 DTM. Resampled to a 10m grid.
Observer height: 2m
No surface features, such as buildings or trees, were included in the analysis.
Earth curvature and light refraction has been included in calculations.

- Legend:**
- Proposed Turbines
 - Viewpoint Location
 - 90° Field of View Viewpoint
 - 53.5° Field of View Viewpoint

- Cumulative Wind Turbines
- Wind Farm Status (01/10/2018)**
- Wind Farm Status (01/10/2018)

- Wind Farm Status (01/10/2018)**
- Wind Farm Status (01/10/2018)
 - Operational; Under Construction

- Zone of Theoretical Visibility**
- No. of Turbines (133m) Visible
- 1 - 3
 - 4 - 6
 - 7 - 9

Blade Tip:	133m
DTM:	OS T5
DTM resolution:	5m
Observer height:	2m
Surface features:	Excluded
Earth curvature:	Included

Title: Figure 9.22a
Viewpoint 2: A835 Black Bridge

Source: Crown copyright and database rights (2016)
OS (license No 0100031673)

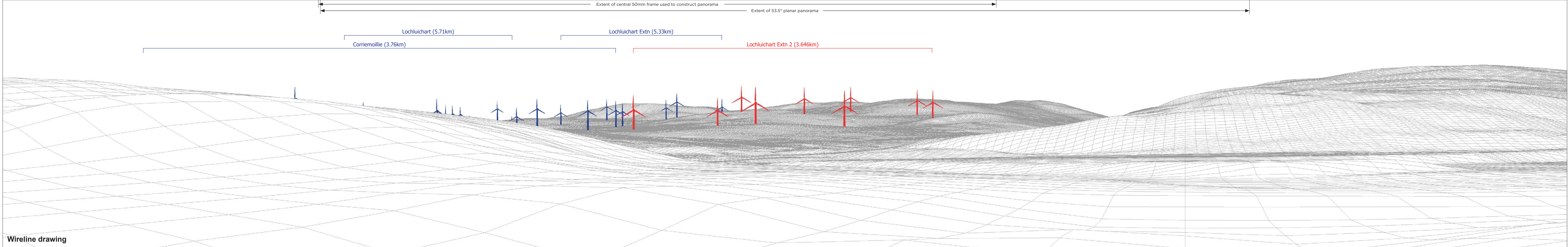
Client: Infinergy

Drawn by: MJF **Checked:** JW

Date: 15/10/2018 **Figure:** 9.22a

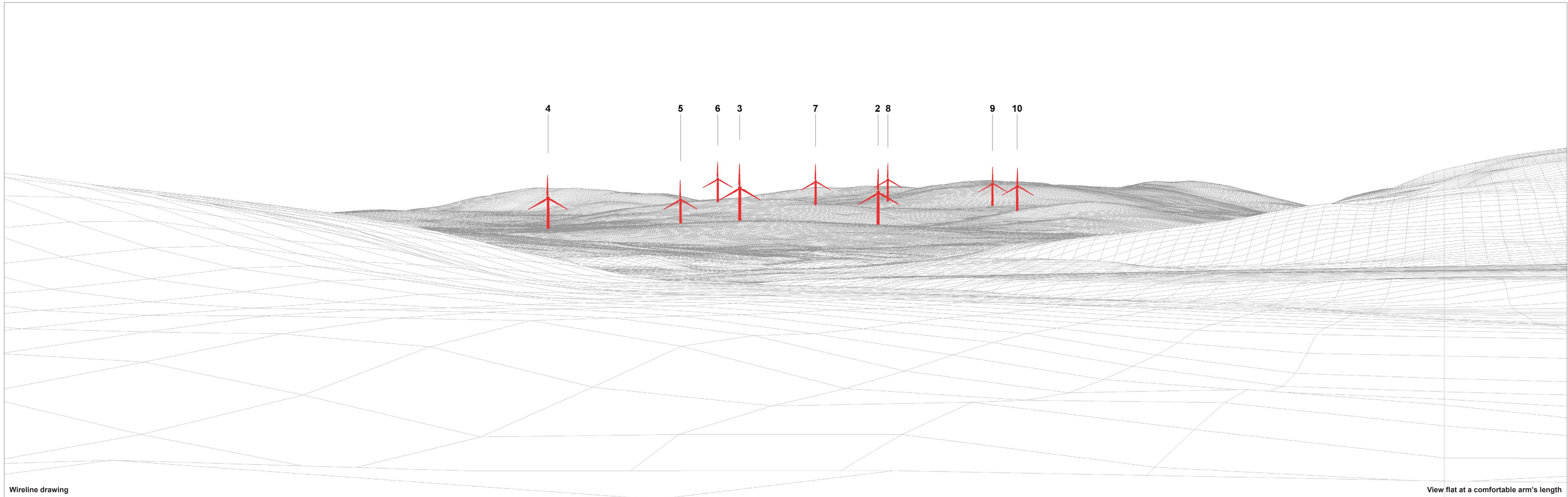
Scale: **Revision No.:** B





OS reference: 237349 E 870830 N	Horizontal field of view: 90° (cylindrical projection)	Camera: Canon EOS 5D Mark II
Eye level: 212.64 m AOD	Principal distance: 522 mm	Lens: 50mm (Canon EF 50mm f/1.4)
Direction of view: 247°		Camera height: 1.5 m AGL
Nearest turbine: 3.646 km		Date and time: 04/02/18, 10:22

Figure: 9.22b
Viewpoint 2: A835, Black Water Bridge



Wireline drawing

View flat at a comfortable arm's length

OS reference: 237349 E 870830 N
 Eye level: 212.64 m AOD
 Direction of view: 247°
 Nearest turbine: 3.646 km

Horizontal field of view: 53.5° (planar projection)
 Principal distance: 812.5 mm
 Paper size: 841 x 297 mm (half A1)
 Correct printed image size: 820 x 260 mm

Camera: Canon EOS 5D Mark II
 Lens: 50mm (Canon EF 50mm f/1.4)
 Camera height: 1.5 m AGL
 Date and time: 04/02/18, 10:22

Figure: 9.22c
 Viewpoint 2: A835, Black Water Bidge



Photomontage (operational turbines have been montaged in this view)

View flat at a comfortable arm's length

OS reference:	237349 E 870830 N	Horizontal field of view:	53.5° (planar projection)	Camera:	Canon EOS 5D Mark II
Eye level:	212.64 m AOD	Principal distance	812.5 mm	Lens:	50mm (Canon EF 50mm f/1.4)
Direction of view:	247°	Paper size:	841 x 297 mm (half A1)	Camera height:	1.5 m AGL
Nearest turbine:	3.646 km	Correct printed image size:	820 x 260 mm	Date and time:	04/02/18, 10:22

Figure: 9.22d
Viewpoint 2: A835, Black Water Bridge