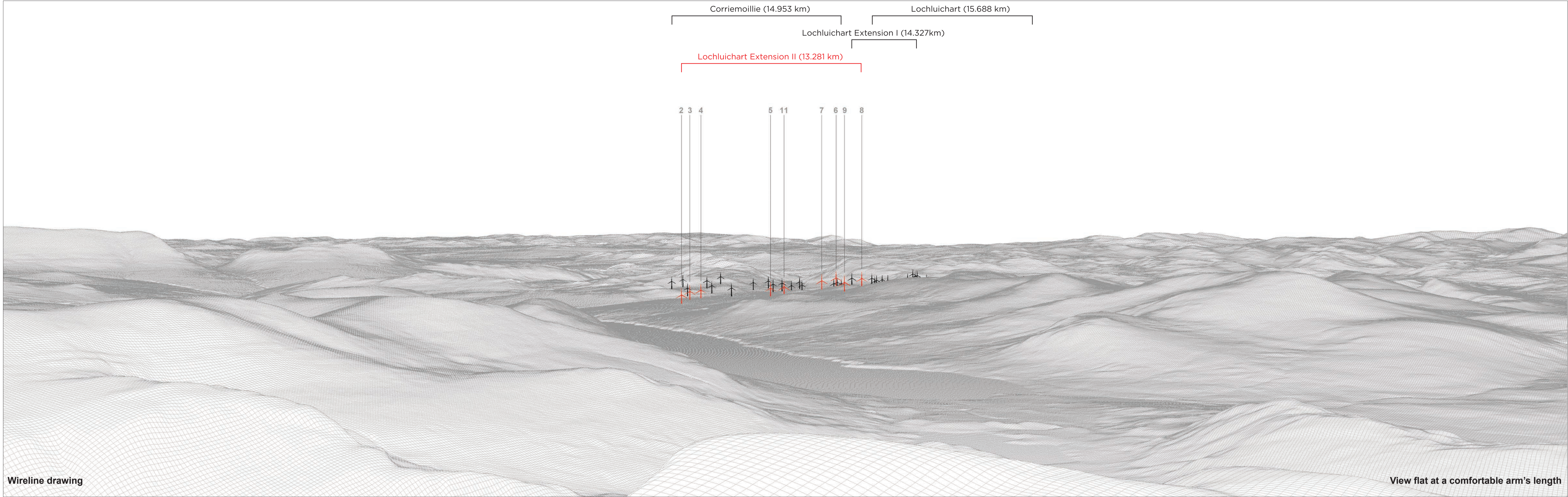


## Summit of Beinn Dearg



Wireline drawing

View flat at a comfortable arm's length

Wireline view illustrating Lochluichart Extension II wind farm layout.

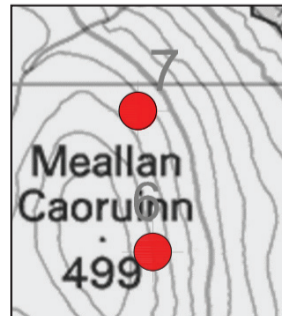
**Viewpoint Data: -**

OS Reference:	- 225962 E 881147 N
Eye level:	- c 1081.67 m AOD
Direction of view:	- 150 degrees
Nearest turbine:	- 13.281 km
Horizontal field of view:	- 53.5 degrees
Principal distance:	- 812.5 mm
Paper size:	- 841 x 594 mm (A1)
Correct printed image sizes:	- 820 x 260 mm
Camera height:	- 1.5 m AGL
Turbine height (to tip):	- 133m

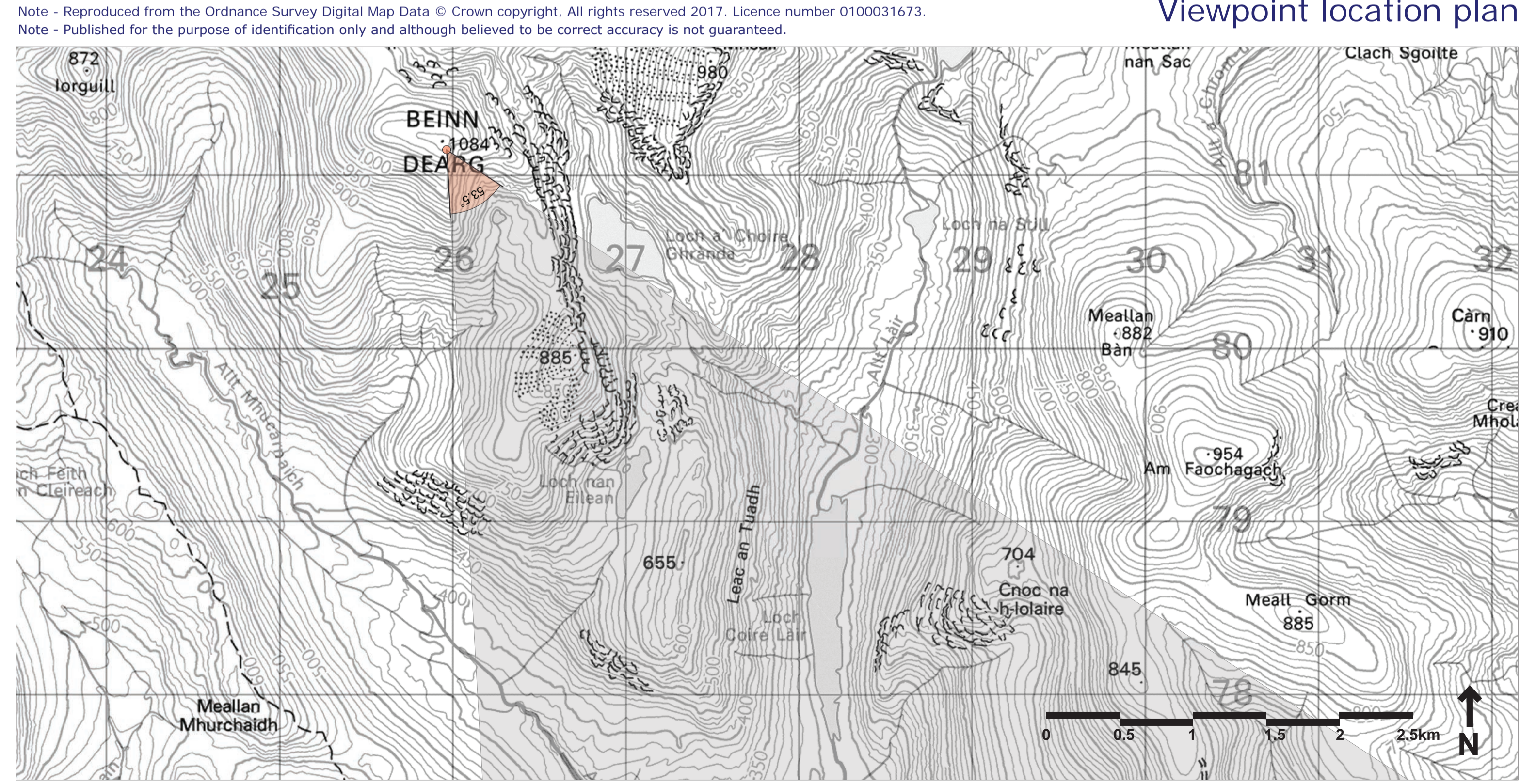
**Legend: -**



Viewpoint location



Proposed layout



Wireline: While the landform and the curvature of the earth are taken into account, no features such as trees or buildings, which might otherwise obscure the views, are accounted for in the wirelines.

Note: Visualisations can give an impression of the appearance of a landscape and proposed wind farm. However neither photographs or visualisations can convey a view exactly as it would be seen by the human eye in reality.